

# CARLISLE IN FAWN 8X47 CORDED BOLSTER

## Cutting Instructions:

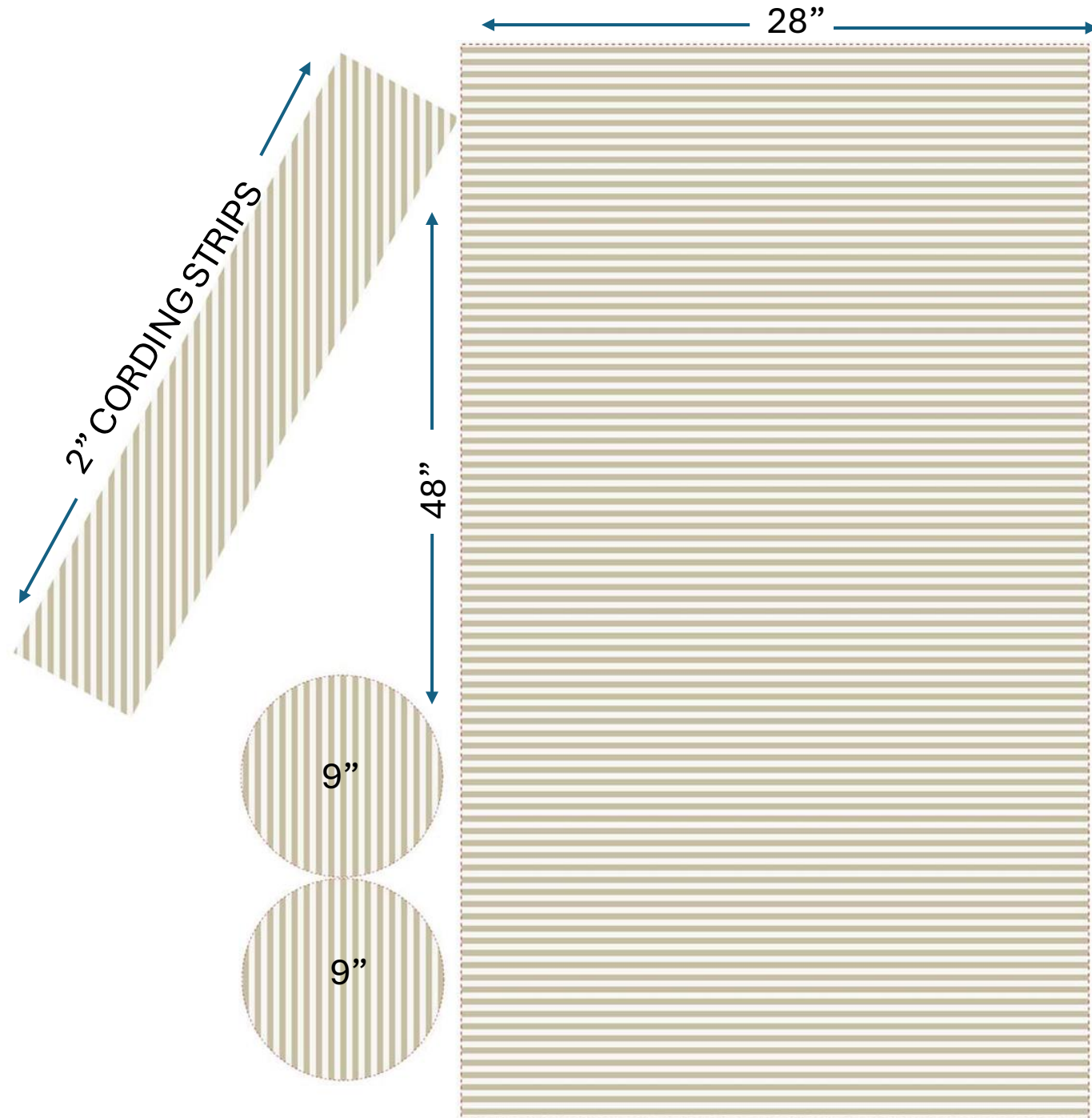
**MEASURE FIRST**

## Pillow notes:

Serge all sides of pillow  
Cording around circles  
Hidden zipper  
Zipper zips left to right

Care Label— sew inside - near zipper closure  
Check order for fabric

## FINISHED BOLSTER ORIENTATION



LITTLE CARLISLEIN ICE  
KING DUVET  
FINISH SIZE 108X95

Cutting Instructions:

**MEASURE FIRST**

6 PIECES - 4 sides and 2 center piece

**EACH PIECE SHOULD BE 112" LONG**  
**(total cut size 112X100)**

Duvet Construction:

Engineered art file

Hidden Zipper closure – zips  
left to right.

Care Label - LEENANE

INSIDE SEWN WITH ZIPPER  
TAPE NEAR ZIPPER CLOSURE



GINGER IN SANCTUARY  
KING DUVET  
FINISH SIZE 108X95

Cutting Instructions:

**MEASURE FIRST**

6 PIECES - 4 sides and 2 center piece

**EACH PIECE SHOULD BE 112" LONG**  
**(total cut size 112X100)**

Duvet Construction:

Engineered art file

Hidden Zipper closure – zips  
left to right.

Care Label - LEENANE

INSIDE SEWN WITH ZIPPER  
TAPE NEAR ZIPPER CLOSURE





# GINGER CELADON 22X22 CORDED PILLOW

## Cutting Instructions:

### **MEASURE FIRST**

4 piece – (2) 23.5" X 23.5"  
(2) 2" strips for cording



← (2) CORDING STRIPS (2" wide) →

## Pillows

Hidden Zipper – zips left to right

Corded pillows – zipper goes behind cording

Care Label – sew inside - near zipper closure

Check order for fabric

## Brand Label

NO BRAND LABEL PROVIDED



# GEORGIA BLUE GREEN 26X26 PILLOW

## Cutting Instructions:

**MEASURE FIRST**

2 piece – (2) 27” X 27”



## Pillows

Hidden Zipper – zips left to right

Care Label – sew inside - near zipper closure  
Check order for fabric

## Brand Label

NO BRAND LABEL PROVIDED



# MEAGAN FAWN REVERSE 8X37 CORDED BOLSTER

## Cutting Instructions:

**MEASURE FIRST**

## Pillow notes:

Serge all sides of pillow

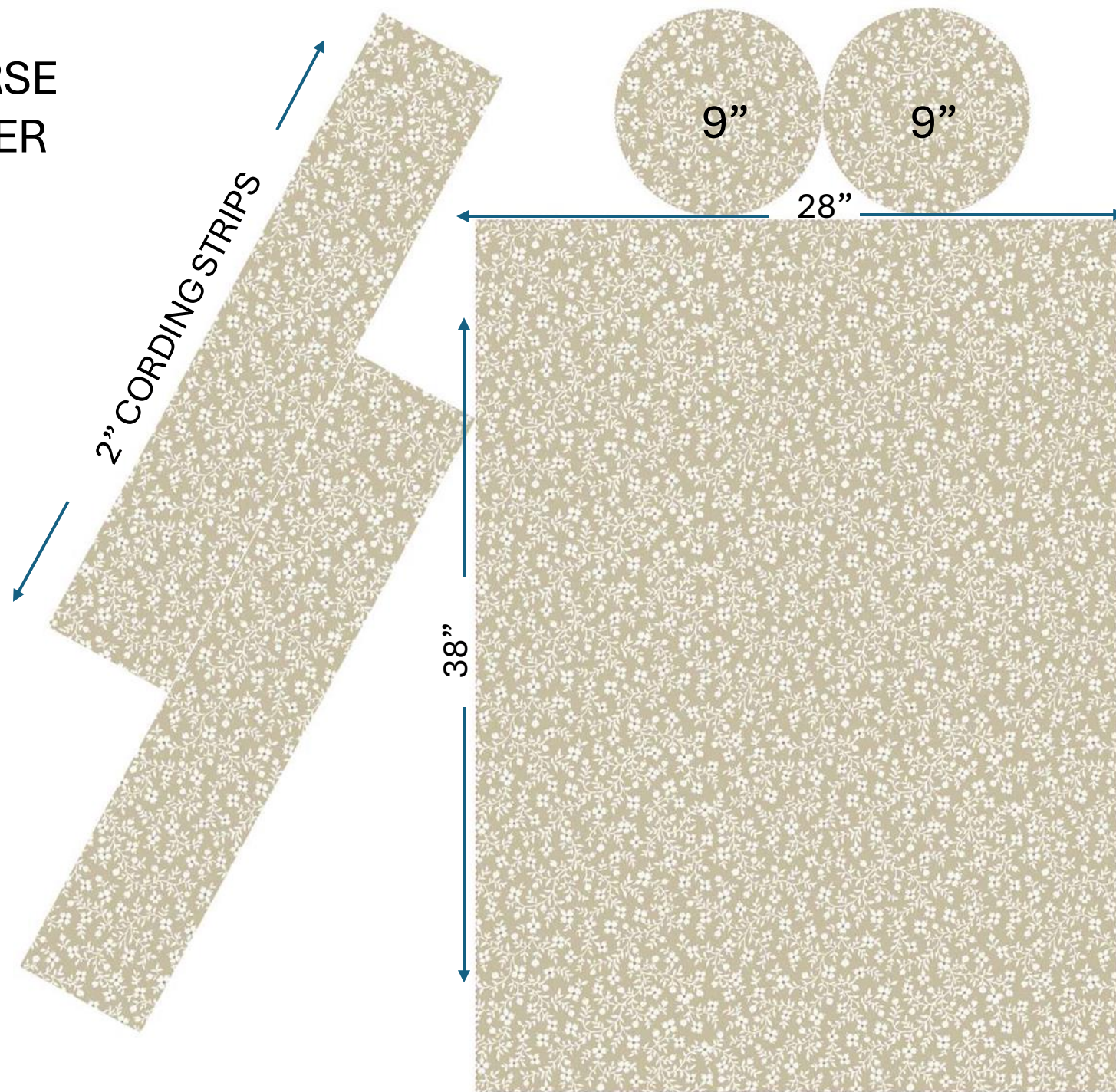
Cording around circles

Hidden zipper

Zipper zips left to right

Care Label— sew inside - near zipper closure  
Check order for fabric

## FINISHED BOLSTER ORIENTATION





# CARLISLE STRIPE IN FAWN 8X37 CORDED BOLSTER

## Cutting Instructions:

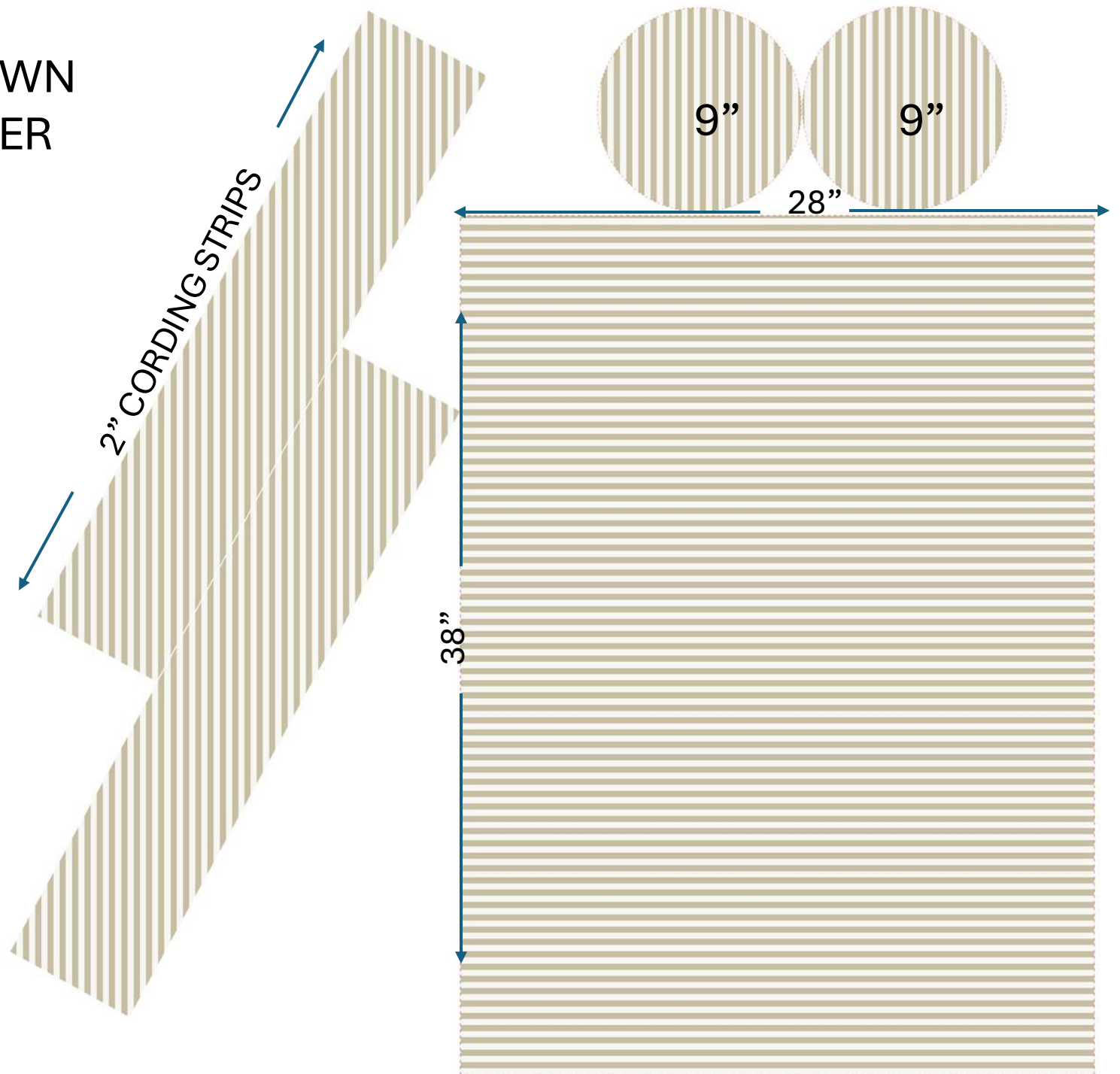
**MEASURE FIRST**

## Pillow notes:

- Serge all sides of pillow
- Cording around circles
- Hidden zipper
- Zipper zips left to right

Care Label— sew inside - near zipper closure  
Check order for fabric

## FINISHED BOLSTER ORIENTATION





SOPHIE FAWN REVERSE  
84X72  
SHOWER CURTAIN

Cutting Instructions:

**MEASURE FIRST**  
**CUT SIZE 88X74**

Peachskin Fabric

Scallop Shower Curtain

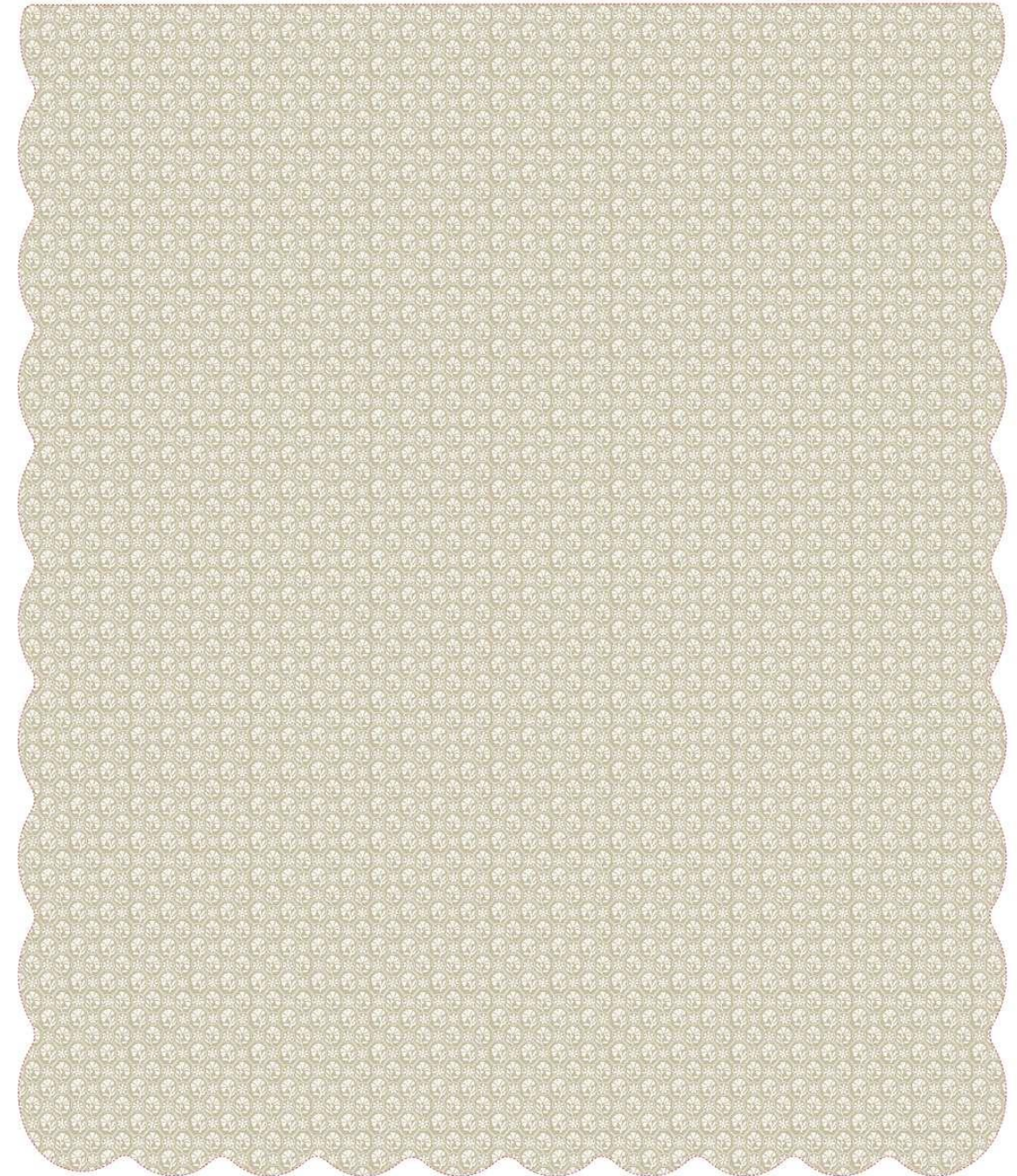
Color of Binding - **White**

Overlock stitch the top

1" hem on the top

Use binding to sew along raw edge of scallop shower curtain

Come in 2" from each side and divide the remaining inches  
by 12 to add (12) ½" button-holes





# AUDREY ORCHID

## 8X37 CORDED BOLSTER

### Cutting Instructions:

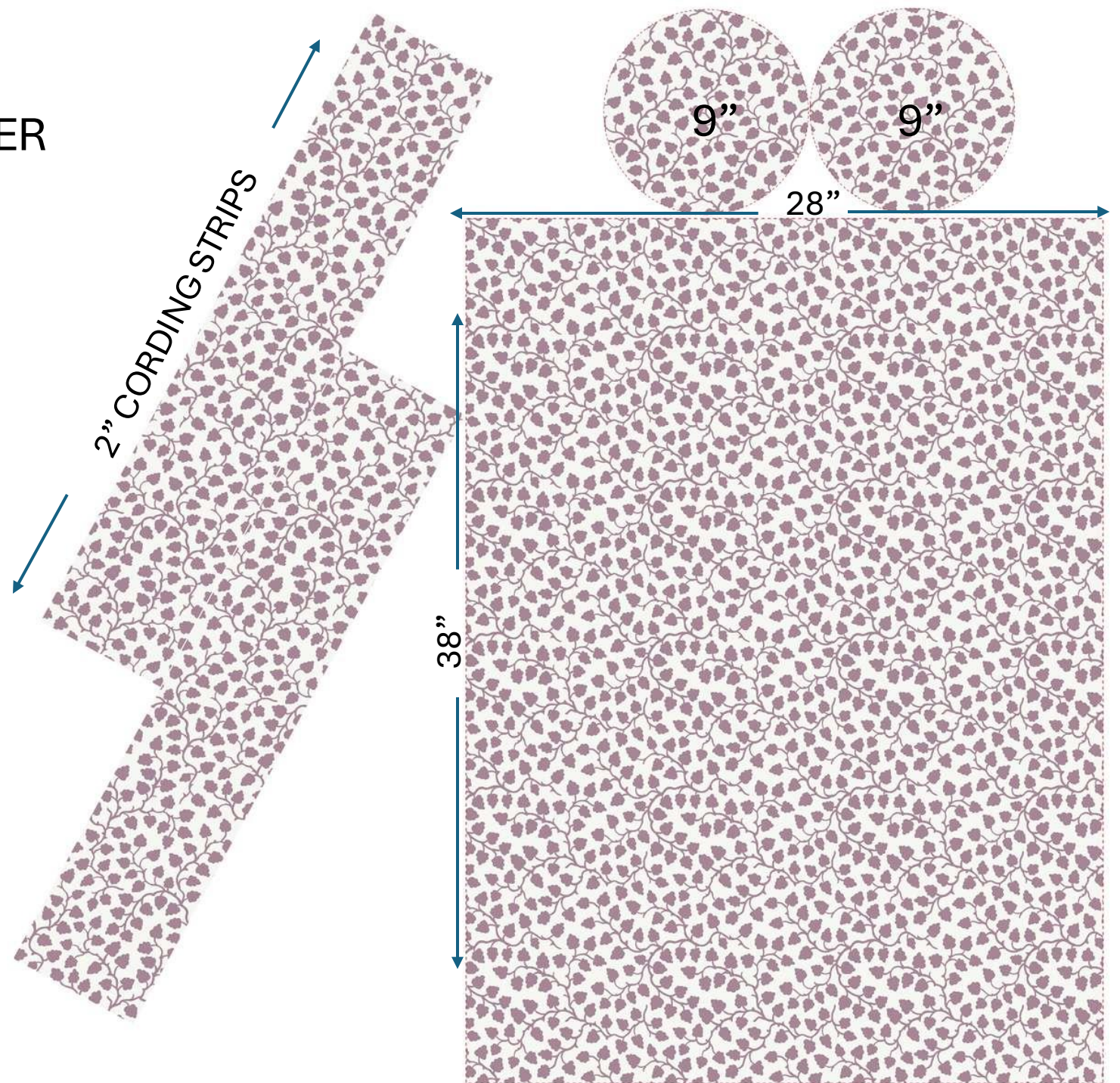
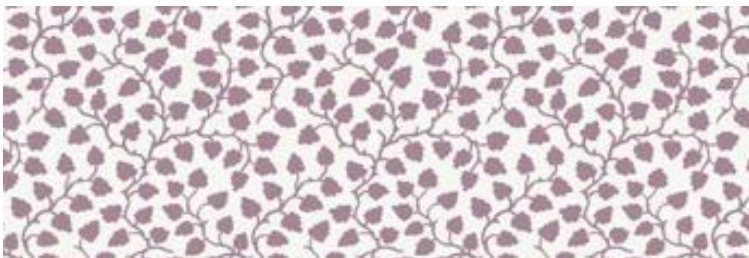
**MEASURE FIRST**

### Pillow notes:

Serge all sides of pillow  
Cording around circles  
Hidden zipper  
Zipper zips left to right

Care Label – sew inside - near zipper closure  
Check order for fabric

### FINISHED BOLSTER ORIENTATION



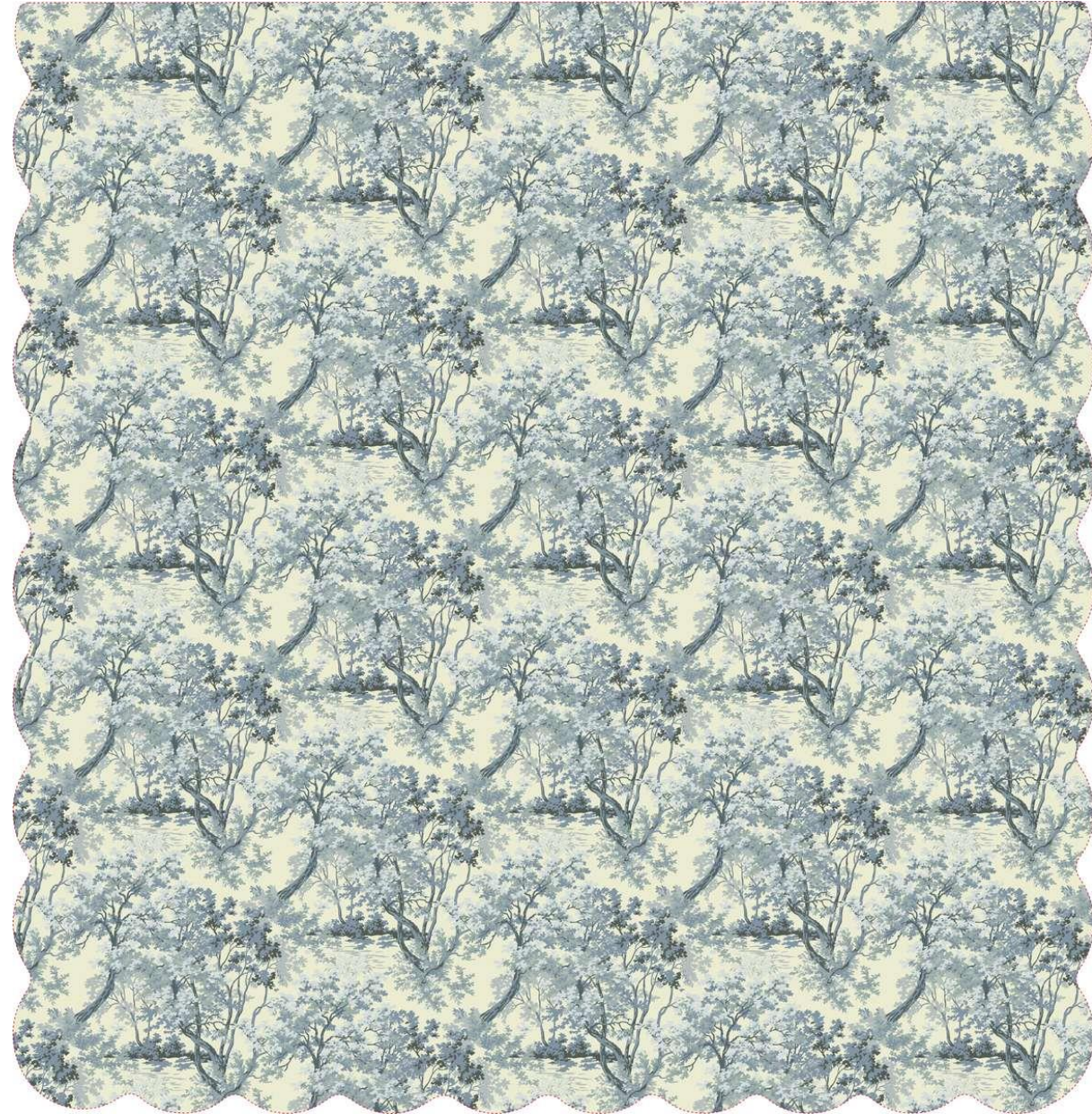


GINGER SLATE  
72X72  
SHOWER CURTAIN

Overlock stitch the top  
1" hem on the top

Use binding to sew along raw edge of scallop shower curtain

Come in 2" from each side and divide the remaining inches  
by 12 to add (12) ½" button-holes





# GINGER SANCTUARY (with Eloise) 14x46 CORDED PILLOW

## Cutting Instructions:

### **MEASURE FIRST**

4 piece – (2) 15" X 47"

(2) 2" strips for cording

## Pillows

Hidden Zipper – zips left to right

Corded pillows – zipper goes behind cording

Care Label – sew inside - near zipper closure  
Check order for fabric

## Brand Label

NO BRAND LABEL PROVIDED



← (2) CORDING STRIPS (2" wide) →



# JASPER ELOISE REVERSE 8X37 CORDED BOLSTER

## Cutting Instructions:

**MEASURE FIRST**

## Pillow notes:

Serge all sides of pillow

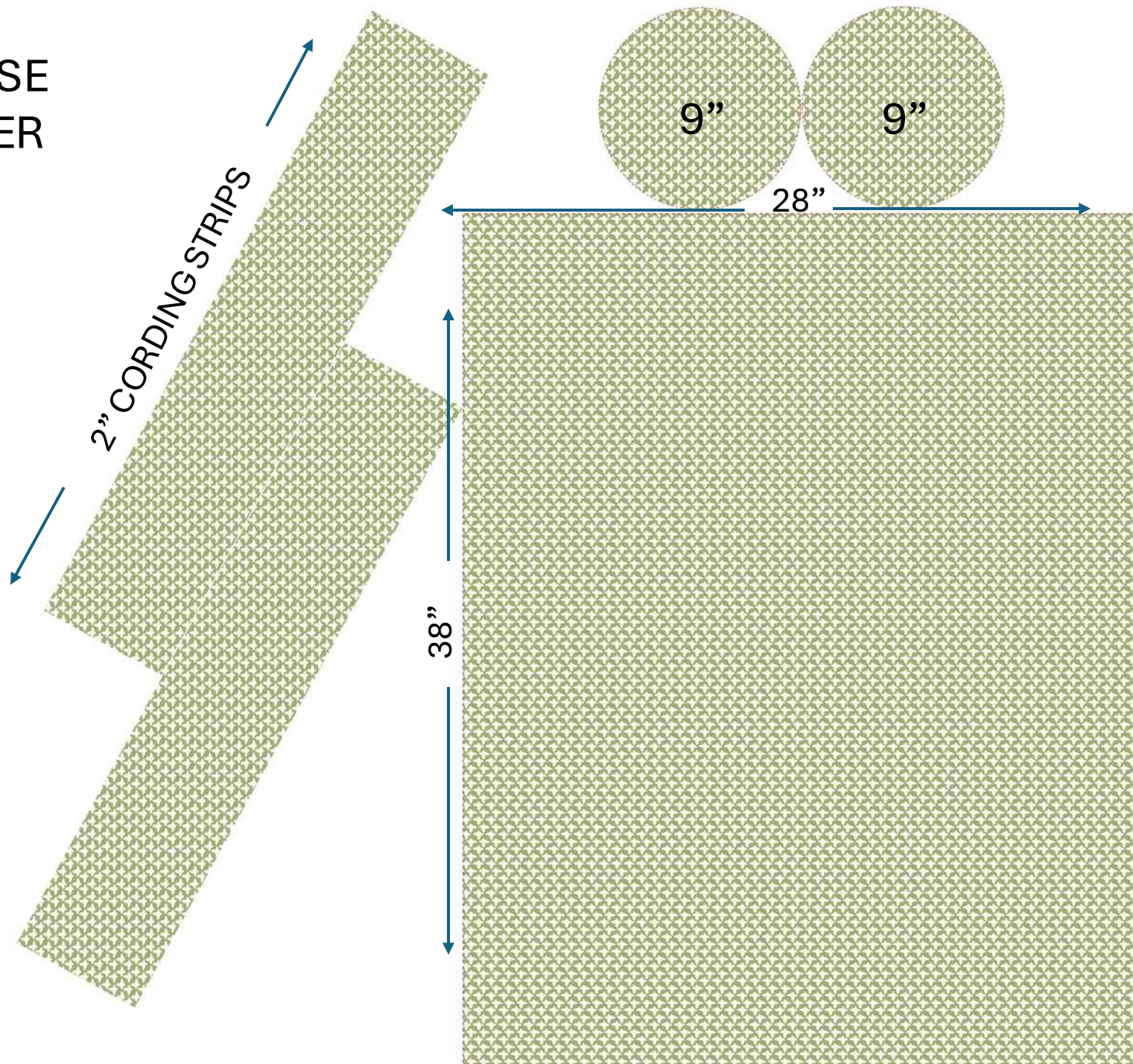
Cording around circles

Hidden zipper

Zipper zips left to right

Care Label – sew inside - near zipper closure  
Check order for fabric

## FINISHED BOLSTER ORIENTATION



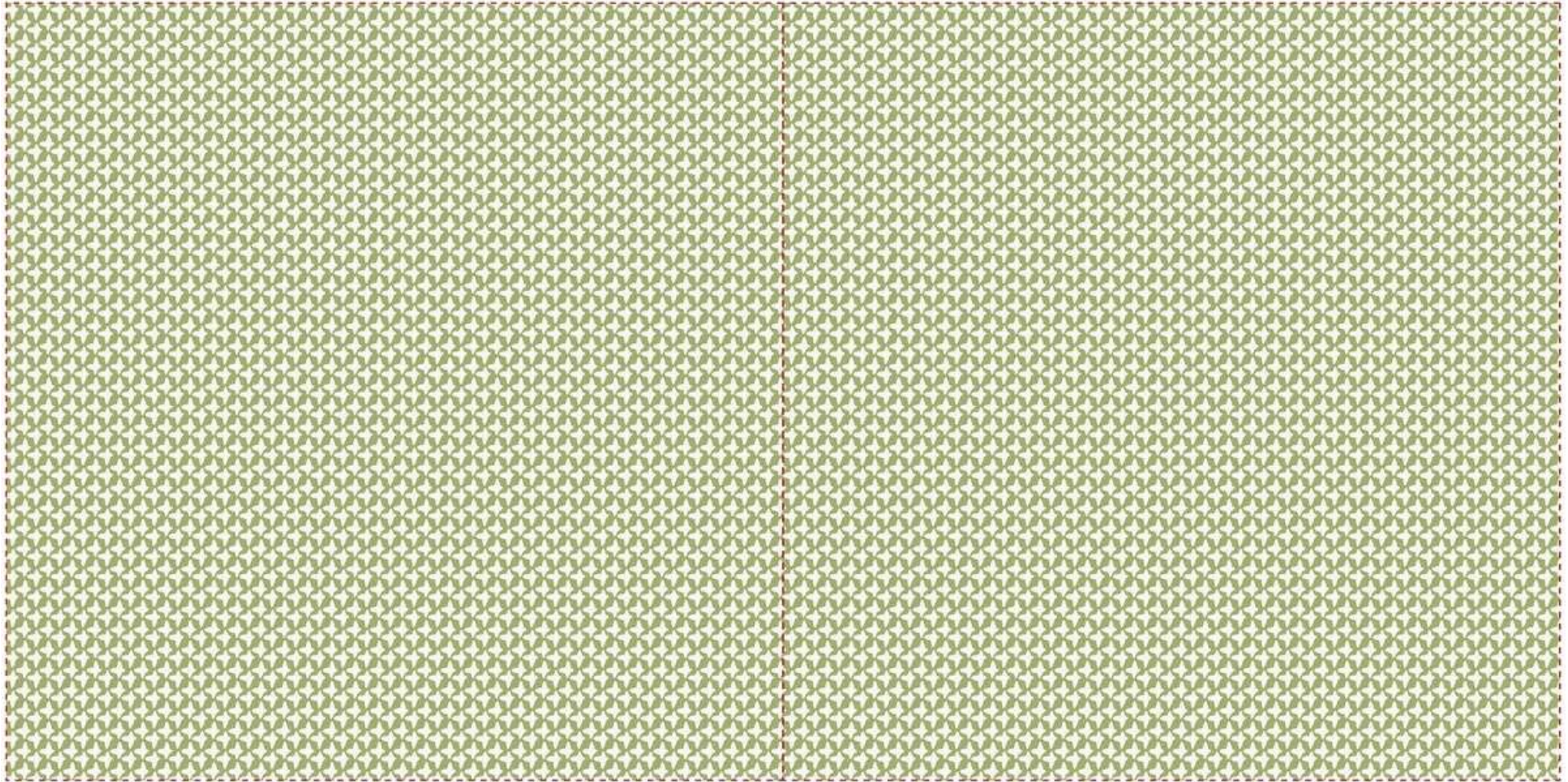


# JASPER ELOISE REVERSE 20X20 PILLOW

## Cutting Instructions:

**MEASURE FIRST**

2 piece – (2) 21” X 21”



## Pillows

Hidden Zipper – zips left to right

Care Label– sew inside - near zipper closure  
Check order for fabric

## Brand Label

NO BRAND LABEL PROVIDED

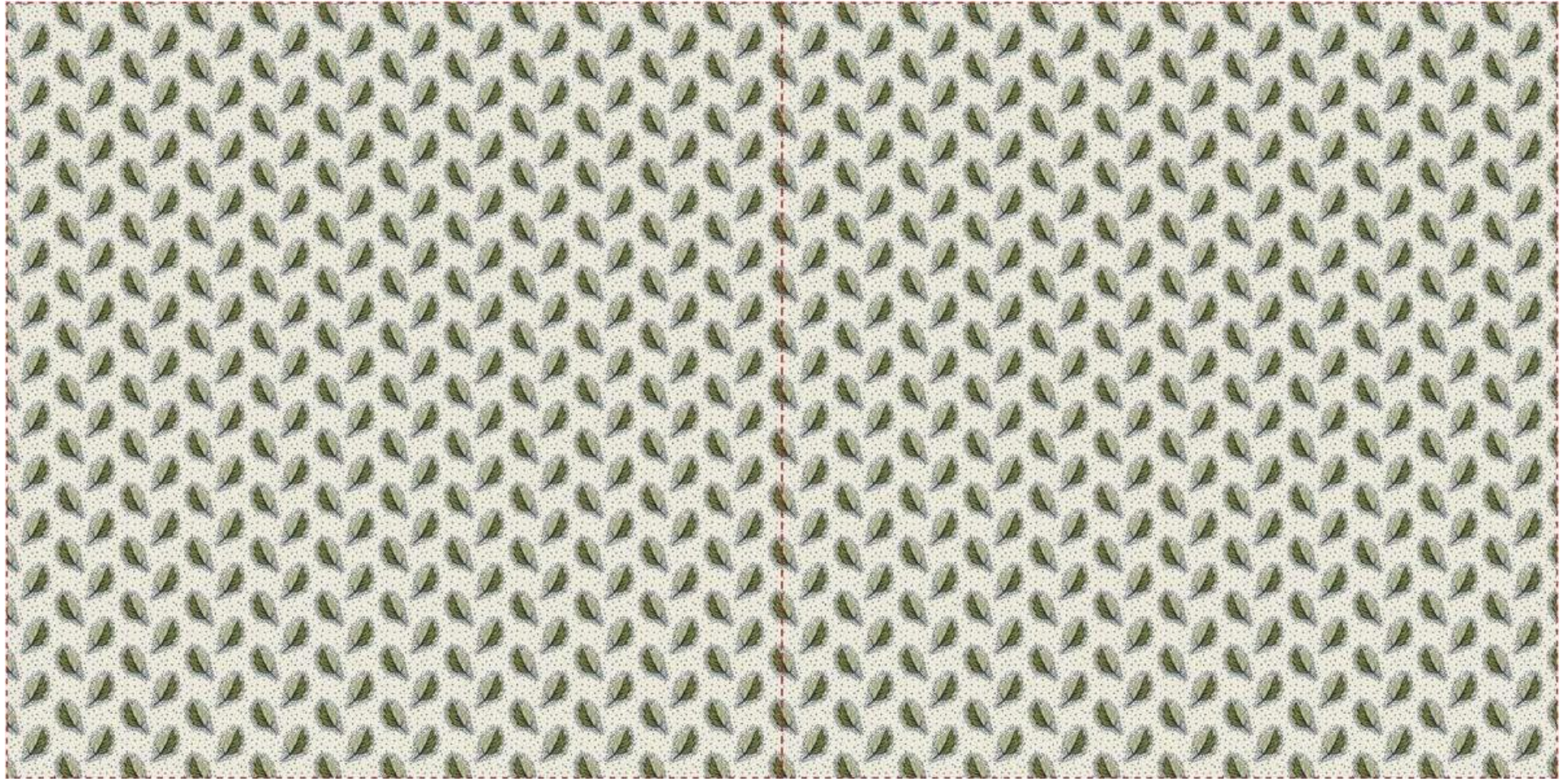


# HUNTER OLIVE/ADMIRAL 20X20 PILLOW

Cutting Instructions:

**MEASURE FIRST**

2 piece – (2) 21” X 21”



Pillows

Hidden Zipper – zips left to right

Care Label– sew inside - near zipper closure

Check order for fabric

Brand Label

NO BRAND LABEL PROVIDED



# GINGER SANCTUARY 22X22 CORDED PILLOW

## Cutting Instructions:

### **MEASURE FIRST**

4 piece – (2) 23" X 23"

(2) 2" strips for cording

## Pillows

Hidden Zipper – zips left to right

Corded pillows – zipper goes behind cording

Care Label – sew inside - near zipper closure  
Check order for fabric

## Brand Label

NO BRAND LABEL PROVIDED



← (2) CORDING STRIPS (2" wide) →



# GEORGIA IN GOLD 22X22 CORDED PILLOW

## Cutting Instructions:

### **MEASURE FIRST**

4 piece – (2) 23” X 23”

(2) 2” strips for cording

## Pillows

Hidden Zipper – zips left to right

Corded pillows – zipper goes behind cording

Care Label – sew inside - near zipper closure  
Check order for fabric

## Brand Label

NO BRAND LABEL PROVIDED



← (2) CORDING STRIPS (2” wide) →



# LITTLE CARLISLE IN DIJON 22X22 CORDED PILLOW

## Cutting Instructions:

### **MEASURE FIRST**

4 piece – (2) 23” X 23”

(2) 2” strips for cording

## Pillows

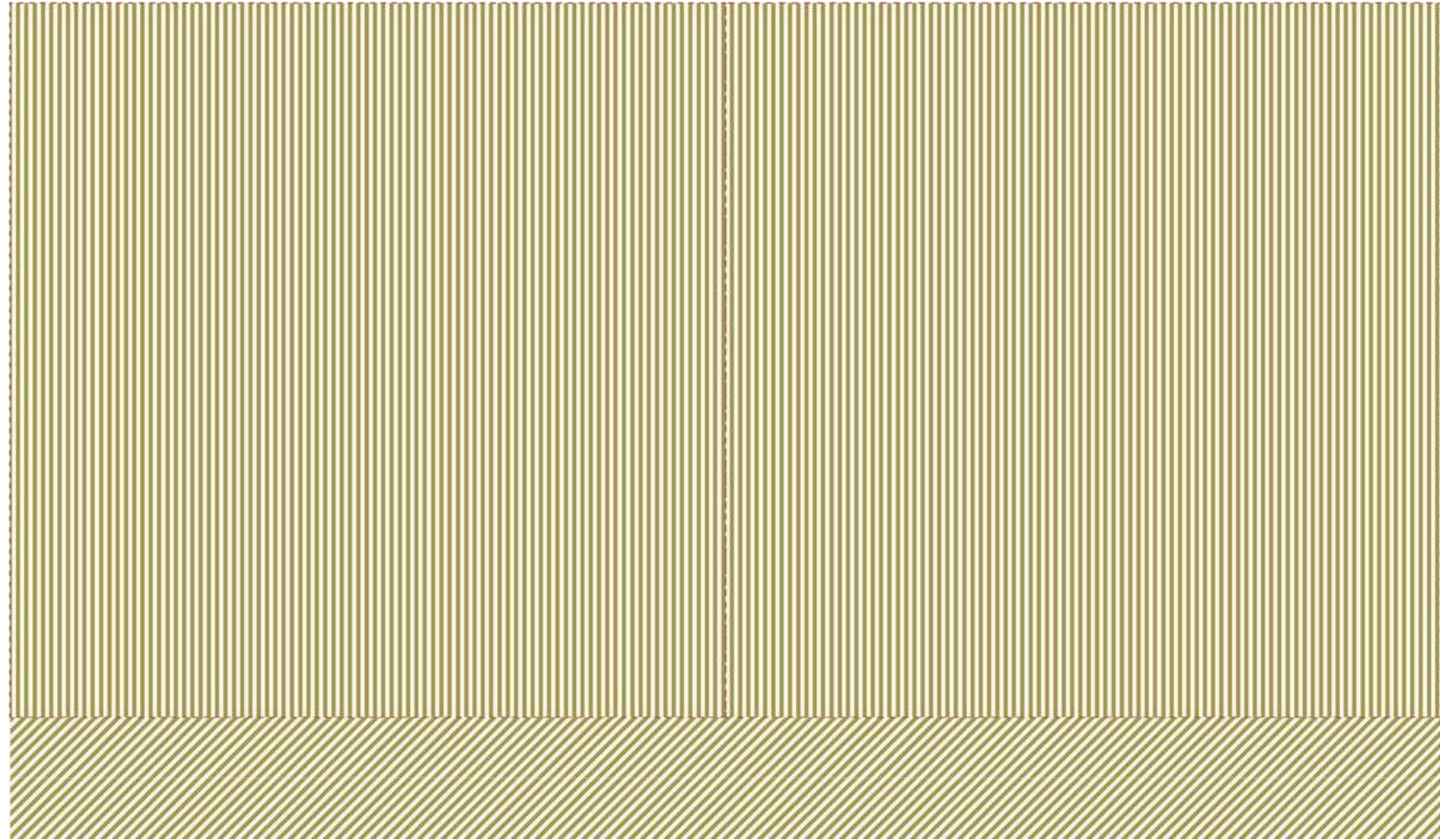
Hidden Zipper – zips left to right

Corded pillows – zipper goes behind cording

Care Label – sew inside - near zipper closure  
Check order for fabric

## Brand Label

NO BRAND LABEL PROVIDED



← (2) CORDING STRIPS (2" wide) →



# GEORGIA IN YELLOW 22X22 CORDED PILLOW

## Cutting Instructions:

### **MEASURE FIRST**

4 piece – (2) 23” X 23”  
(2) 2” strips for cording

## Pillows

Hidden Zipper – zips left to right  
Corded pillows – zipper goes behind cording

Care Label – sew inside - near zipper closure  
Check order for fabric

## Brand Label

NO BRAND LABEL PROVIDED



← (2) CORDING STRIPS (2” wide) →

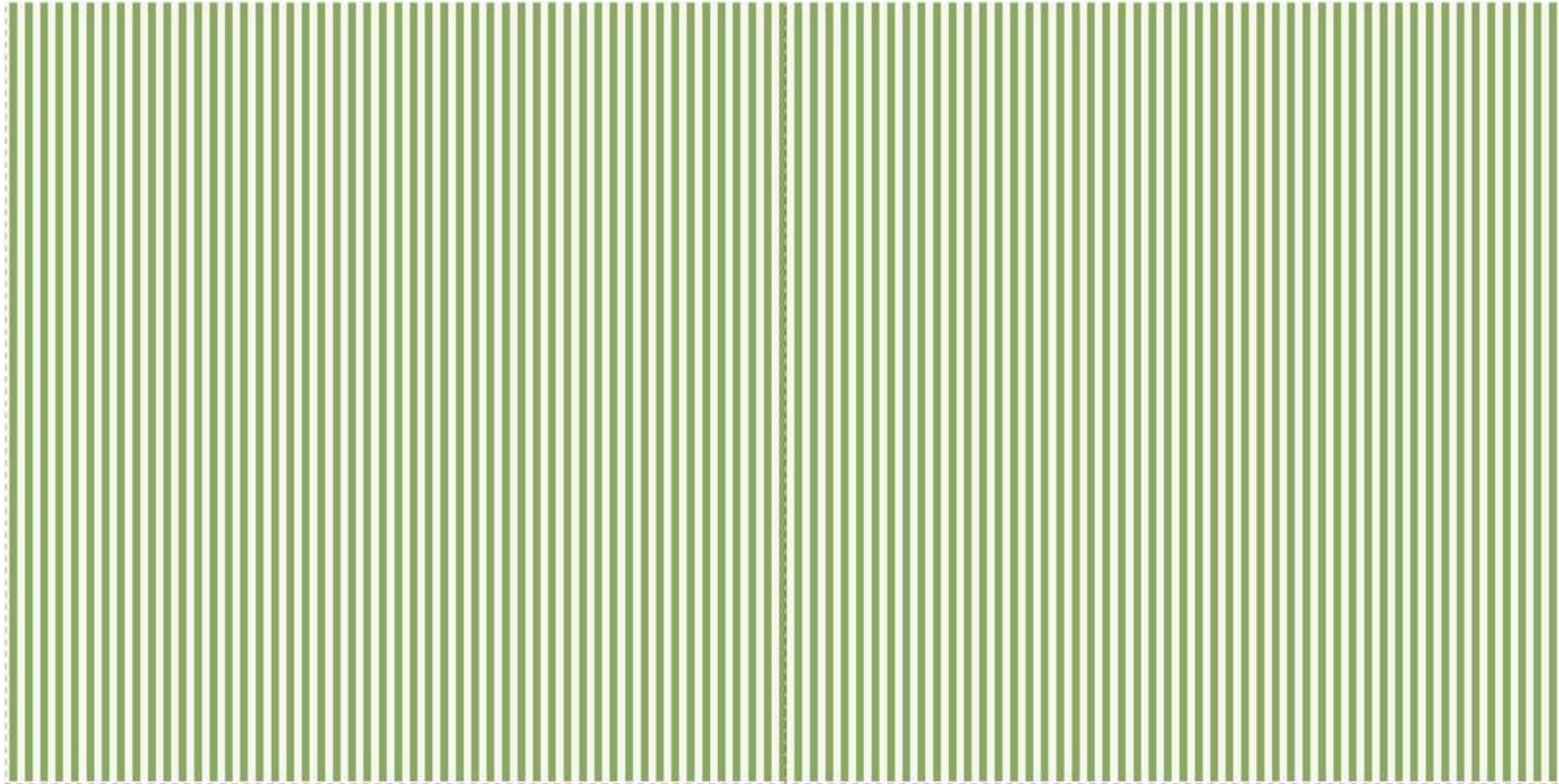


# CARLISLE STRIPE IN MOSS 26X26 PILLOW

## Cutting Instructions:

**MEASURE FIRST**

2 piece – (2) 27" X 27"



## Pillows

Hidden Zipper – zips left to right

Care Label – sew inside - near zipper closure  
Check order for fabric

## Brand Label

NO BRAND LABEL PROVIDED



# IVA ELOISE 26X26 BUTTERFLY FLANGE

## Cutting Instructions:

### **MEASURE FIRST**

4 piece – (2) 27" X 27"

(2) 3" strips for cording

## Pillows

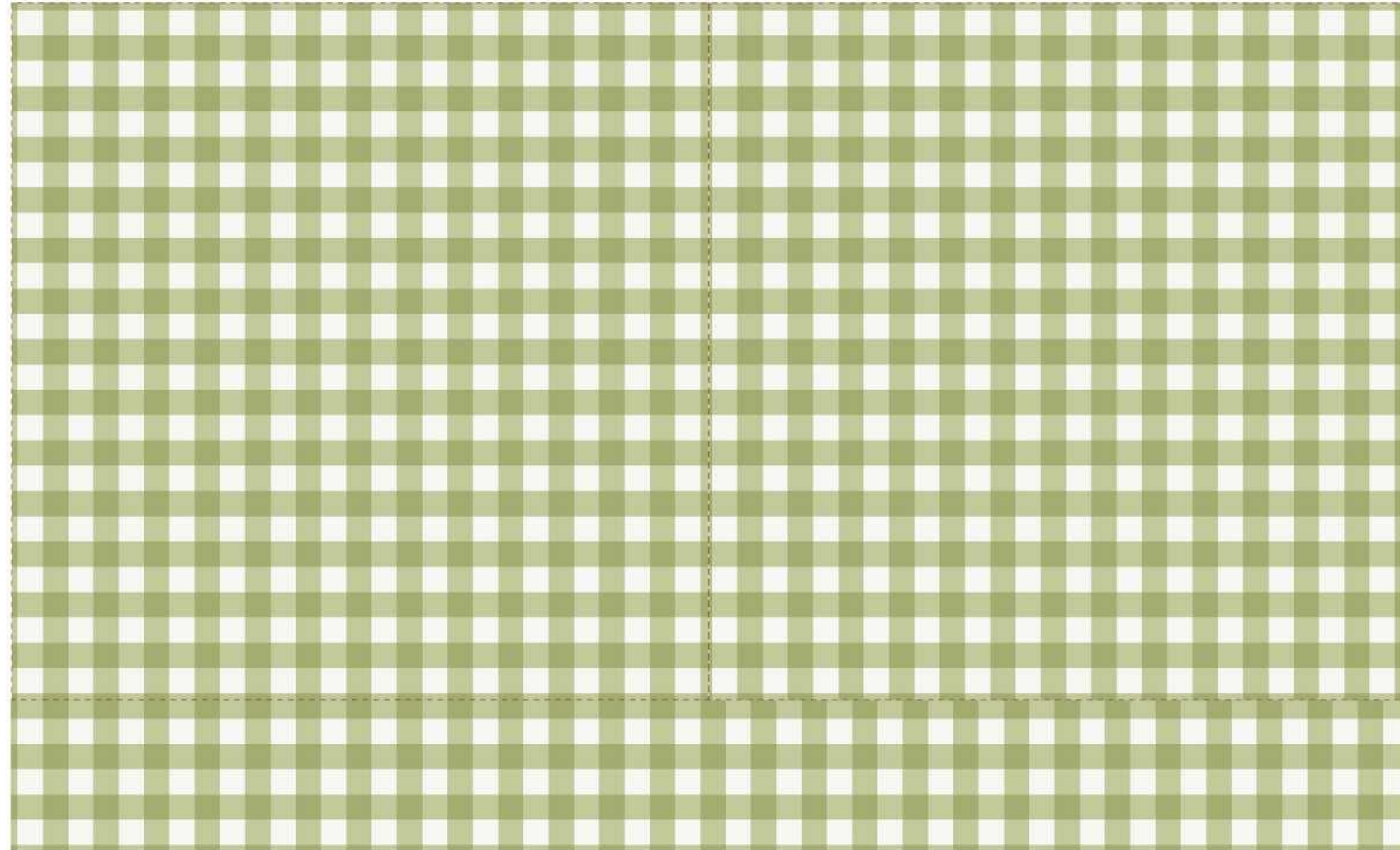
Hidden Zipper – zips left to right

Corded pillows – zipper goes behind cording

Care Label – sew inside - near zipper closure  
Check order for fabric

## Brand Label

NO BRAND LABEL PROVIDED



← (2) CORDING STRIPS (3" wide) →



# AUDREY REVERSE FAWN 22X22 BUTTERFLY FLANGE

## Cutting Instructions:

### **MEASURE FIRST**

4 piece – (2) 23” X 23”  
(2) 3” strips for cording

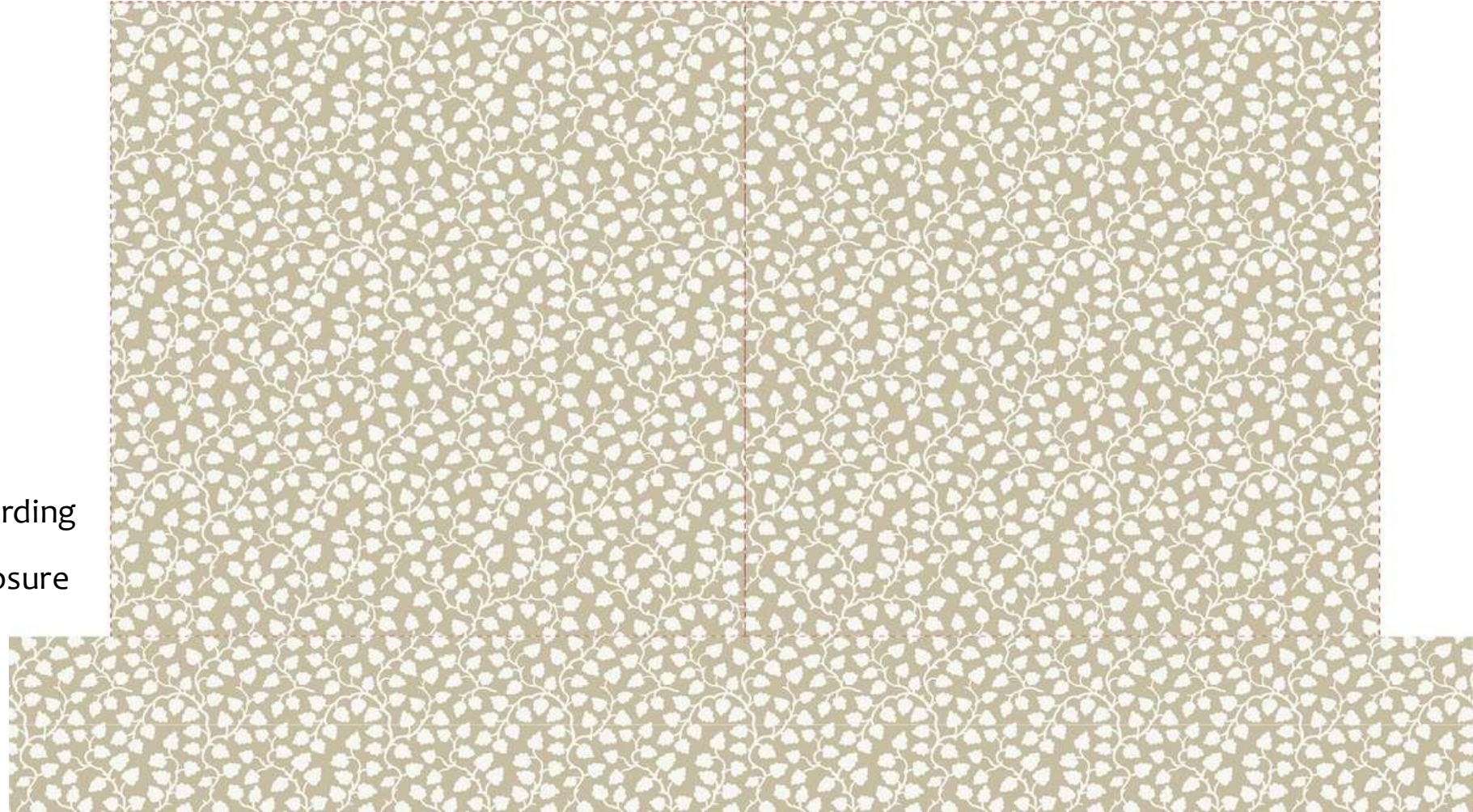
## Pillows

Hidden Zipper – zips left to right  
Corded pillows – zipper goes behind cording

Care Label – sew inside - near zipper closure  
Check order for fabric

## Brand Label

NO BRAND LABEL PROVIDED



← (2) BUTTERFLY FLANGE STRIPS (3” wide) →



# AUDREY REVERSE SEAFOAM 22X22 BUTTERFLY FLANGE

## Cutting Instructions:

### **MEASURE FIRST**

4 piece – (2) 23” X 23”  
(2) 3” strips for cording

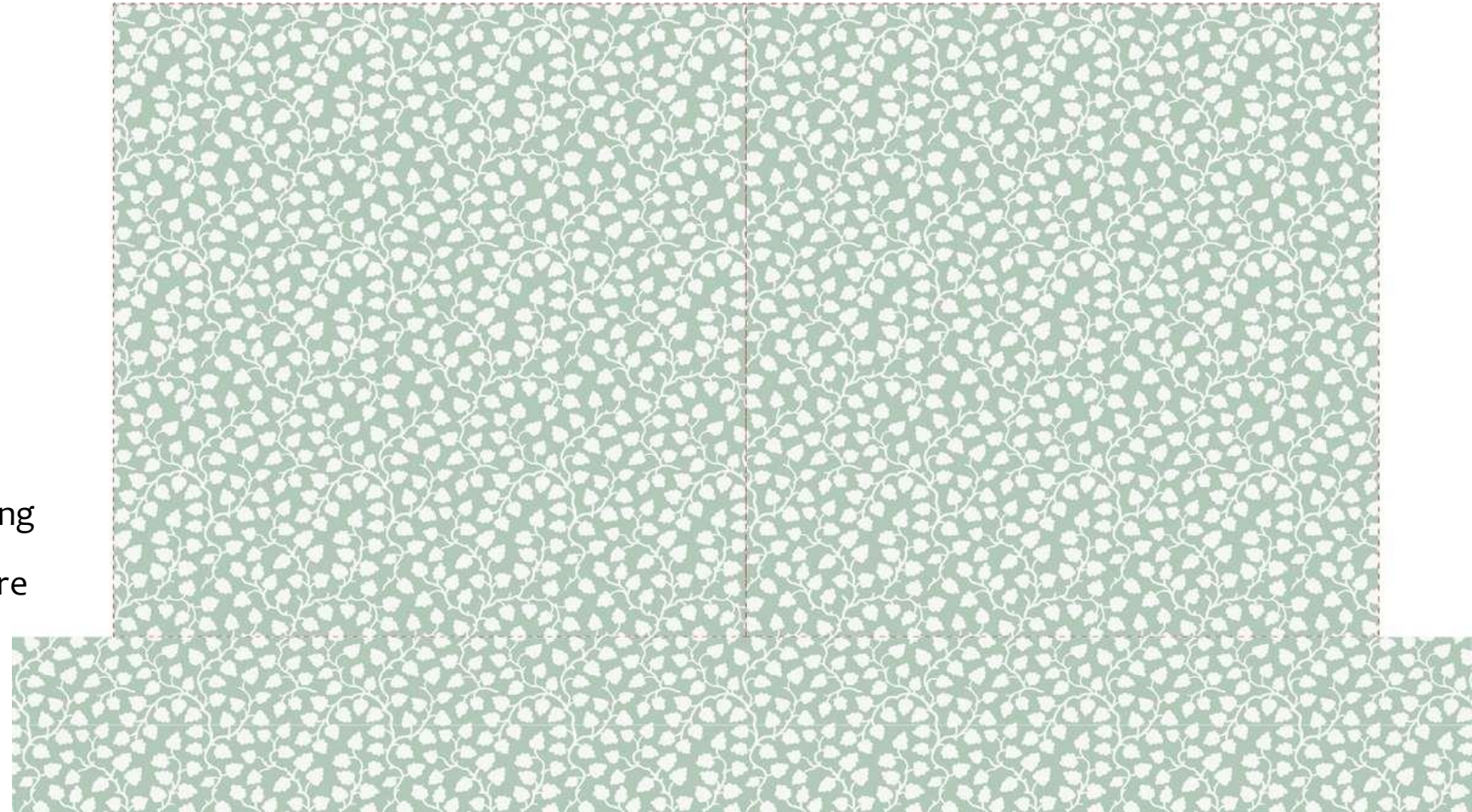
## Pillows

Hidden Zipper – zips left to right  
Corded pillows – zipper goes behind cording

Care Label – sew inside - near zipper closure  
Check order for fabric

## Brand Label

NO BRAND LABEL PROVIDED



← (2) BUTTERFLY FLANGE STRIPS (3” wide) →



# AUDREY REVERSE RAIN 22X22 BUTTERFLY FLANGE

## Cutting Instructions:

### **MEASURE FIRST**

4 piece – (2) 23” X 23”  
(2) 3” strips for cording

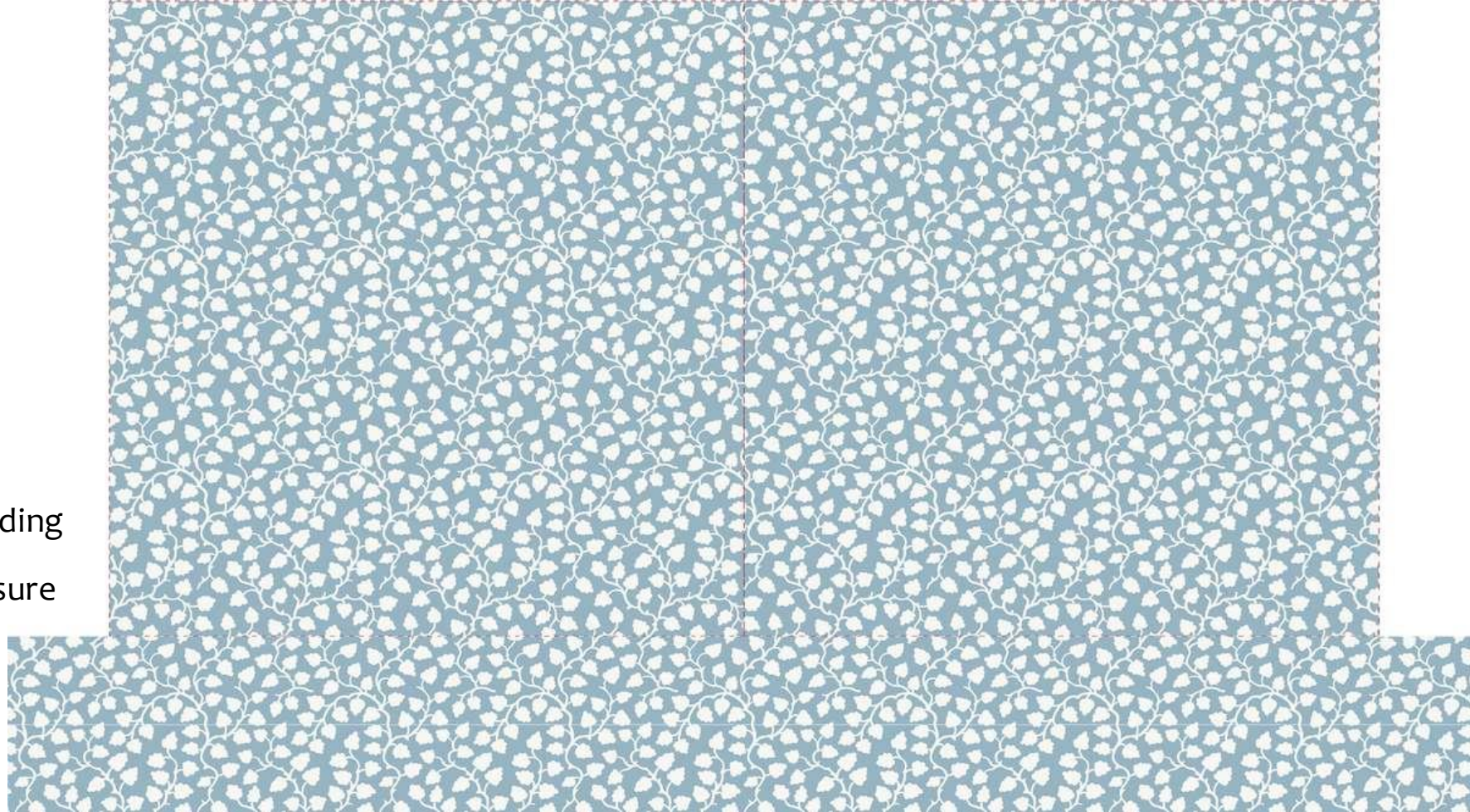
## Pillows

Hidden Zipper – zips left to right  
Corded pillows – zipper goes behind cording

Care Label – sew inside - near zipper closure  
Check order for fabric

## Brand Label

NO BRAND LABEL PROVIDED



← (2) BUTTERFLY FLANGE STRIPS (3” wide) →



# AUDREY REVERSE ELOISE 22X22 BUTTERFLY FLANGE

## Cutting Instructions:

### **MEASURE FIRST**

4 piece – (2) 23” X 23”  
(2) 3” strips for cording

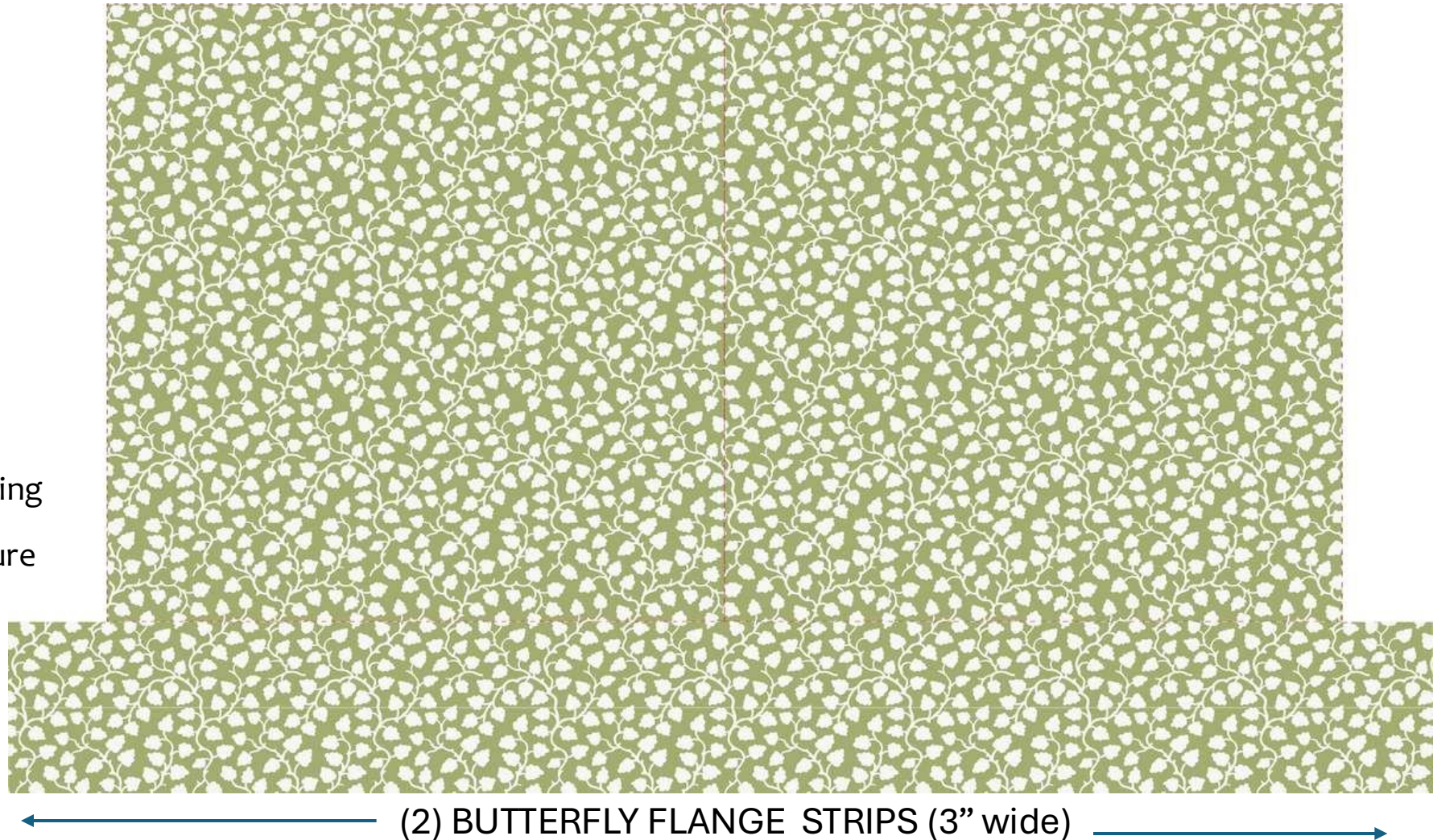
## Pillows

Hidden Zipper – zips left to right  
Corded pillows – zipper goes behind cording

Care Label – sew inside - near zipper closure  
Check order for fabric

## Brand Label

NO BRAND LABEL PROVIDED





# AUDREY REVERSE ICE BLUE 22X22 BUTTERFLY FLANGE

## Cutting Instructions:

### **MEASURE FIRST**

4 piece – (2) 23” X 23”  
(2) 3” strips for cording

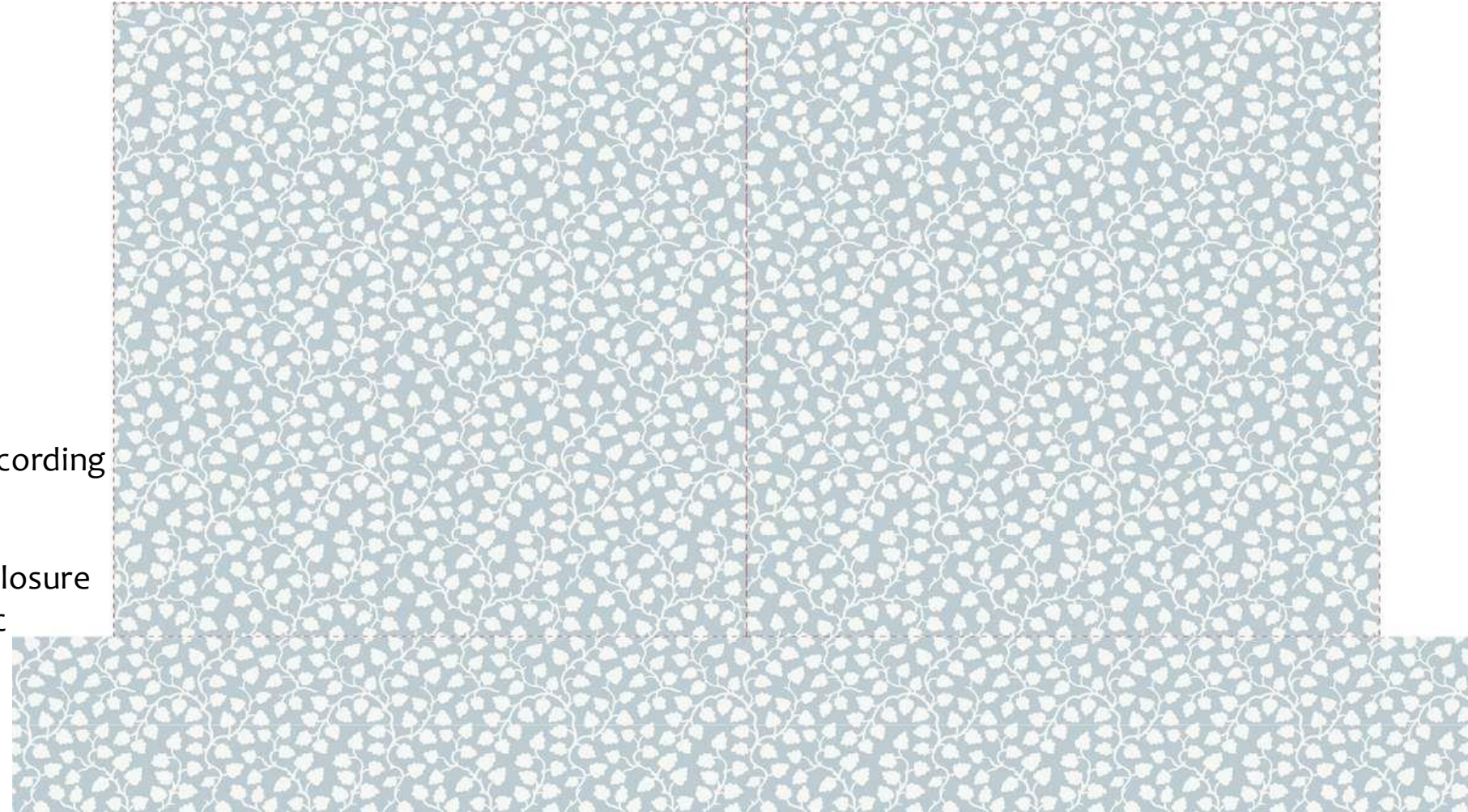
## Pillows

Hidden Zipper – zips left to right  
Corded pillows – zipper goes behind cording

Care Label – sew inside - near zipper closure  
Check order for fabric

## Brand Label

NO BRAND LABEL PROVIDED



← (2) BUTTERFLY FLANGE STRIPS (3” wide) →



# GEORGIA BLUE-GREEN 8X37 CORDED BOLSTER

## Cutting Instructions:

**MEASURE FIRST**

## Pillow notes:

Serge all sides of pillow

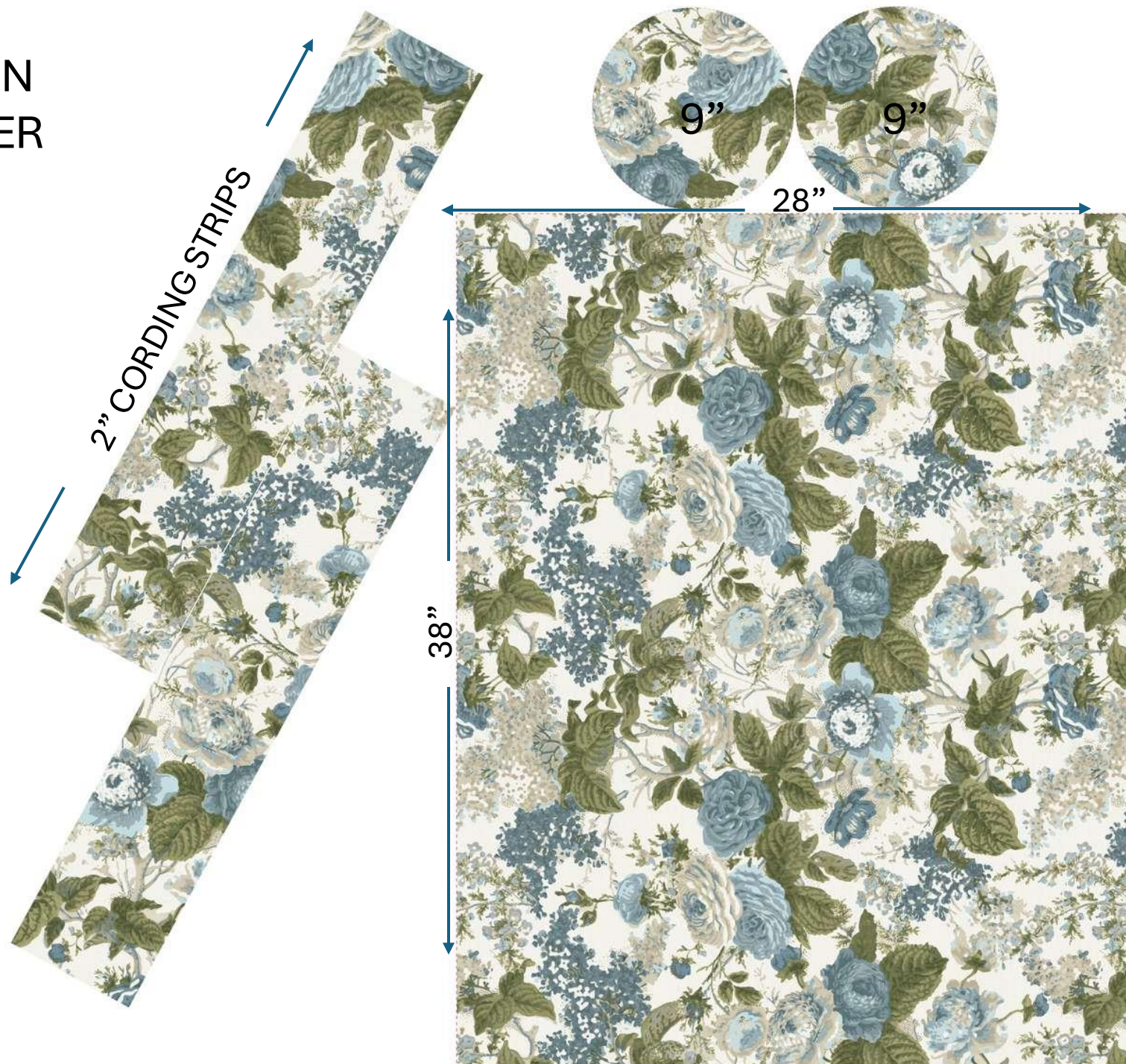
Cording around circles

Hidden zipper

Zipper zips left to right

Care Label— sew inside - near zipper closure  
Check order for fabric

## FINISHED BOLSTER ORIENTATION





# MEGAN IN FAWN REVERSE 26X26 CORDED PILLOW

## Cutting Instructions:

### **MEASURE FIRST**

4 piece – (2) 27" X 27"

(2) 2" strips for cording

## Pillows

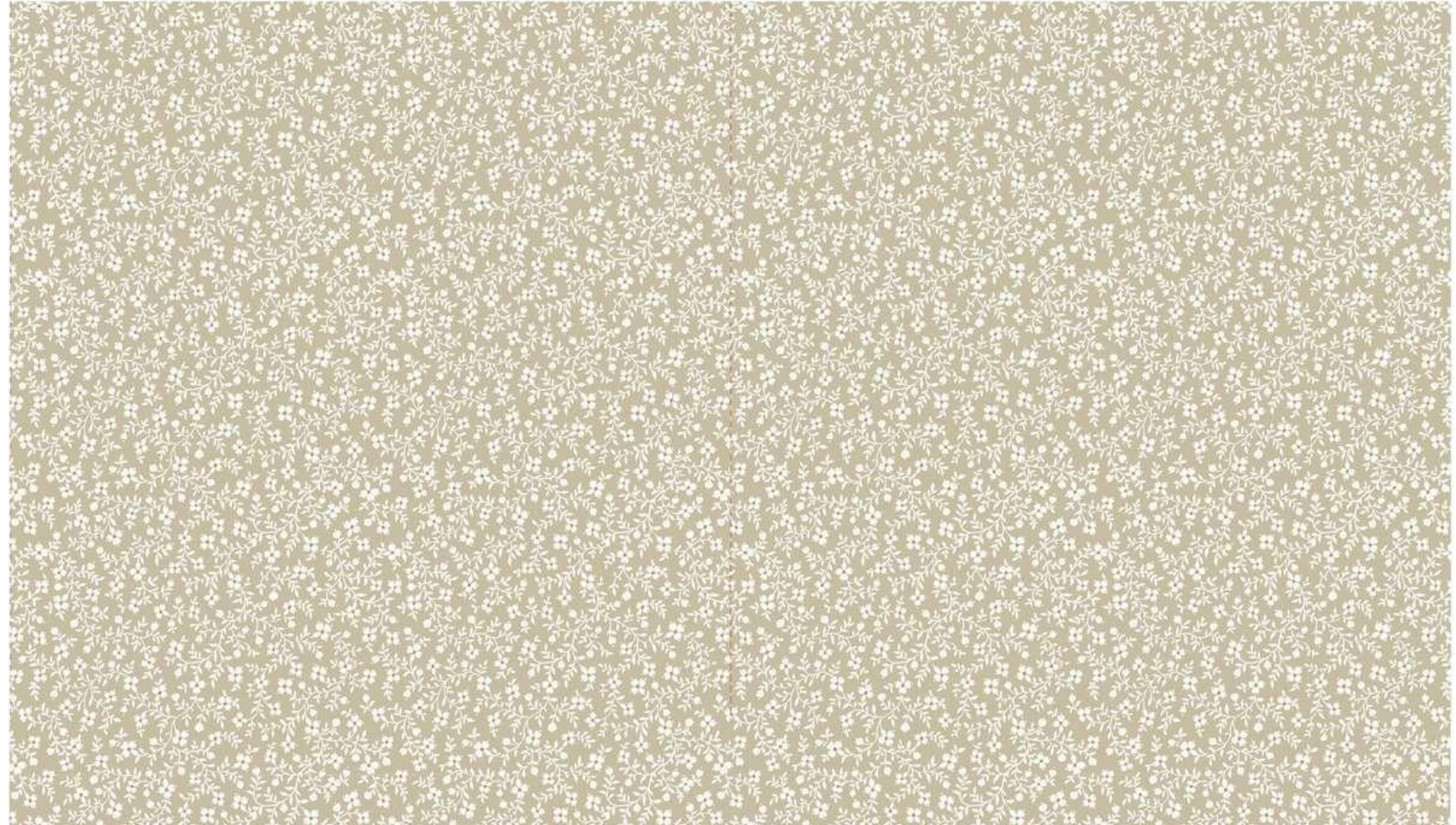
Hidden Zipper – zips left to right

Corded pillows – zipper goes behind cording

Care Label – sew inside - near zipper closure  
Check order for fabric

## Brand Label

NO BRAND LABEL PROVIDED



← (2) CORDING STRIPS (2" wide) →



# MEGA IN SANCTUARY REVERSE 26X26 CORDED PILLOW

## Cutting Instructions:

### **MEASURE FIRST**

4 piece – (2) 27" X 27"

(2) 2" strips for cording

## Pillows

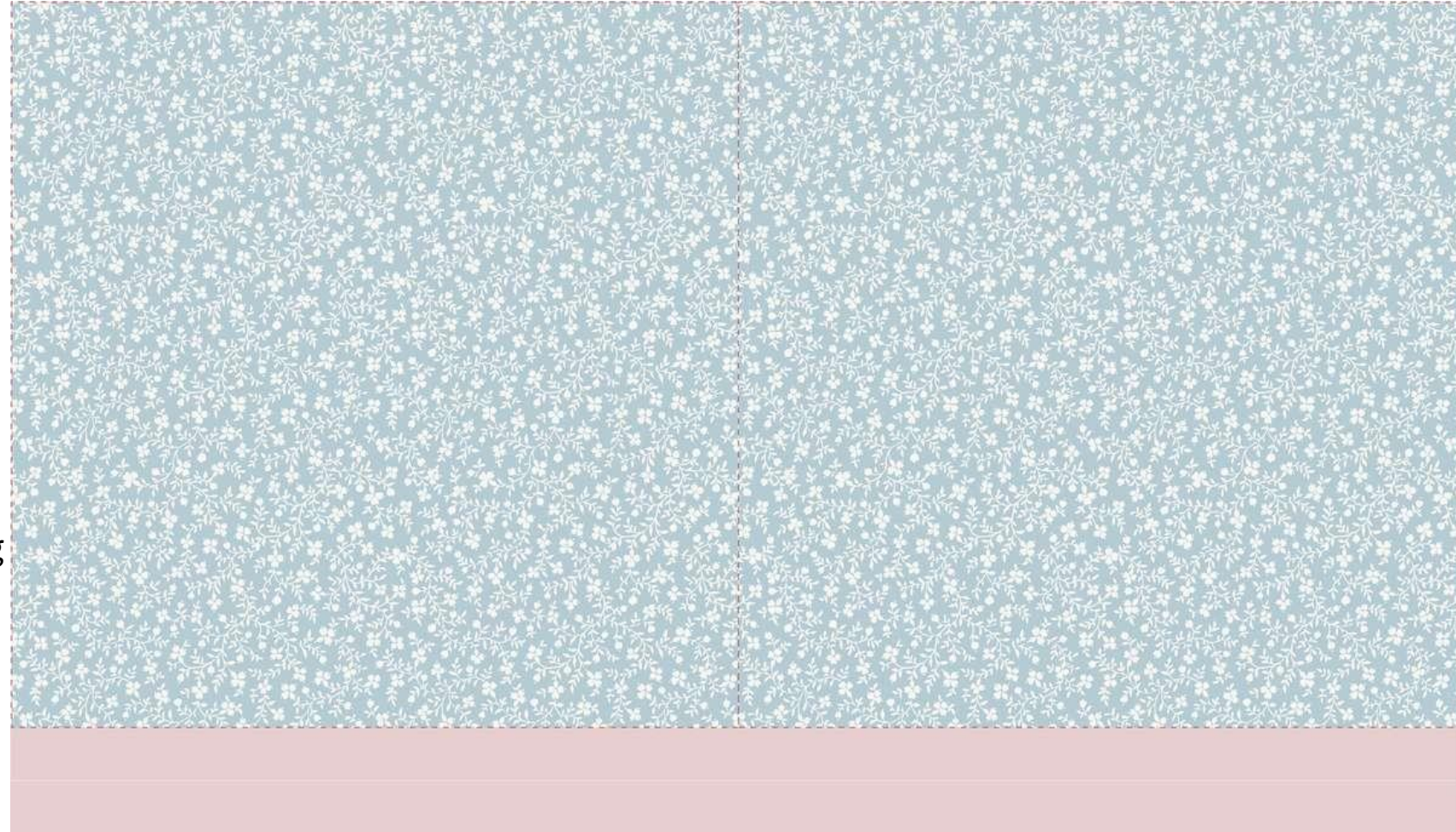
Hidden Zipper – zips left to right

Corded pillows – zipper goes behind cording

Care Label – sew inside - near zipper closure  
Check order for fabric

## Brand Label

NO BRAND LABEL PROVIDED



(2) CORDING STRIPS (2" wide)



GEORGIA IN BALLET  
KING DUVET  
FINISH SIZE 108X95

Cutting Instructions:

**MEASURE FIRST**

6 PIECES - 4 sides and 2 center piece

**EACH PIECE SHOULD BE 110" LONG**  
**(total cut size 110X96)**

Duvet Construction:

Engineered art file

Hidden Zipper closure – zips  
left to right.

Care Label - LEENANE

INSIDE SEWN WITH ZIPPER  
TAPE NEAR ZIPPER CLOSURE





# JASPER DIJON REVERSE 22X22 WITH OLIVE CORDING

## Cutting Instructions:

### **MEASURE FIRST**

4 piece – (2) 23” X 23”  
(2) 2” strips for cording

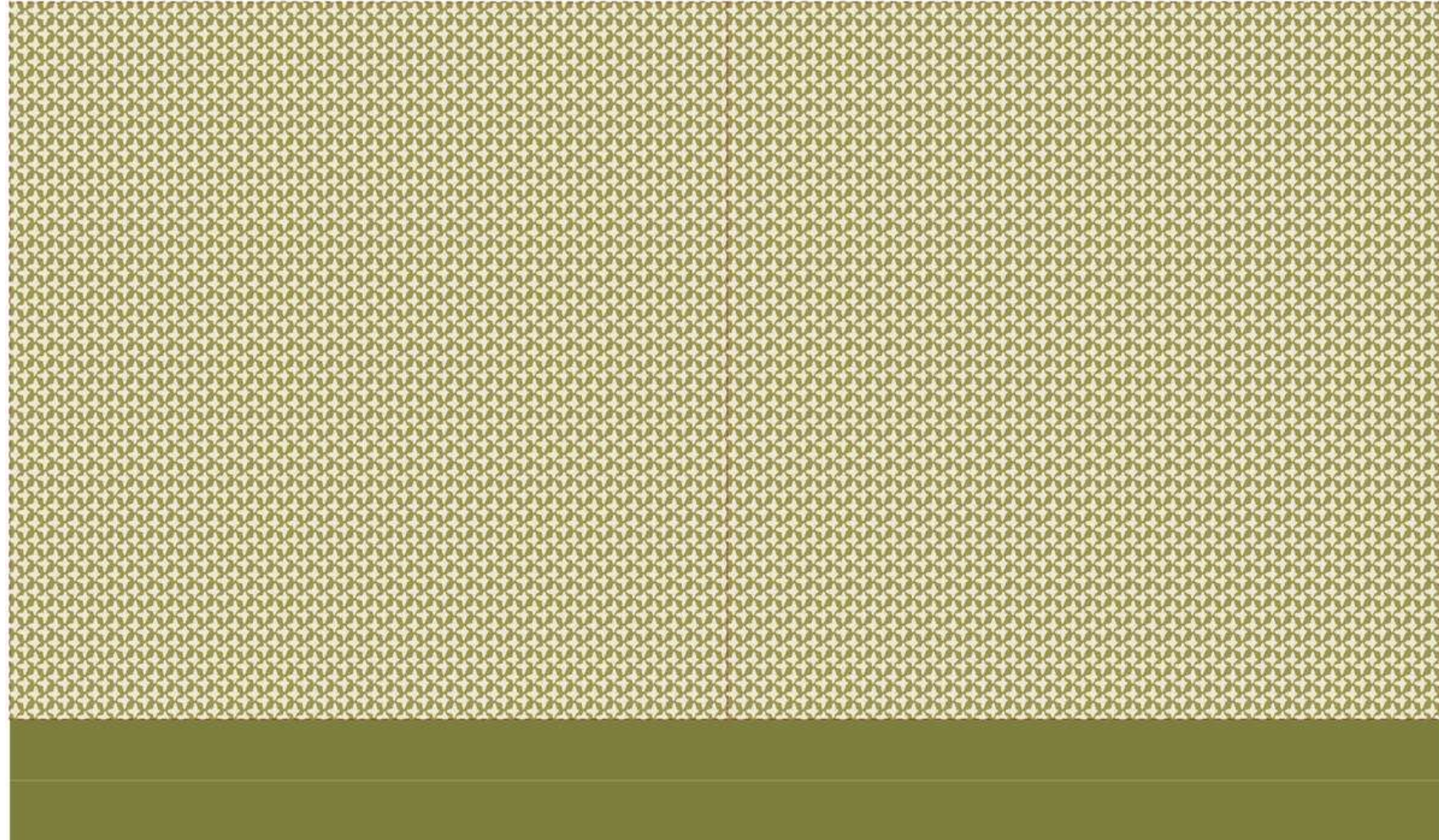
## Pillows

Hidden Zipper – zips left to right  
Corded pillows – zipper goes behind cording

Care Label – sew inside - near zipper closure  
Check order for fabric

## Brand Label

NO BRAND LABEL PROVIDED



← (2) CORDING STRIPS (2" wide) →



# DOTTY NATURAL 26X26 PILLOW

Cutting Instructions:

**MEASURE FIRST**

2 piece – (2) 27” X 27”



## Pillows

Hidden Zipper – zips left to right

Care Label– sew inside - near zipper closure  
Check order for fabric

## Brand Label

NO BRAND LABEL PROVIDED

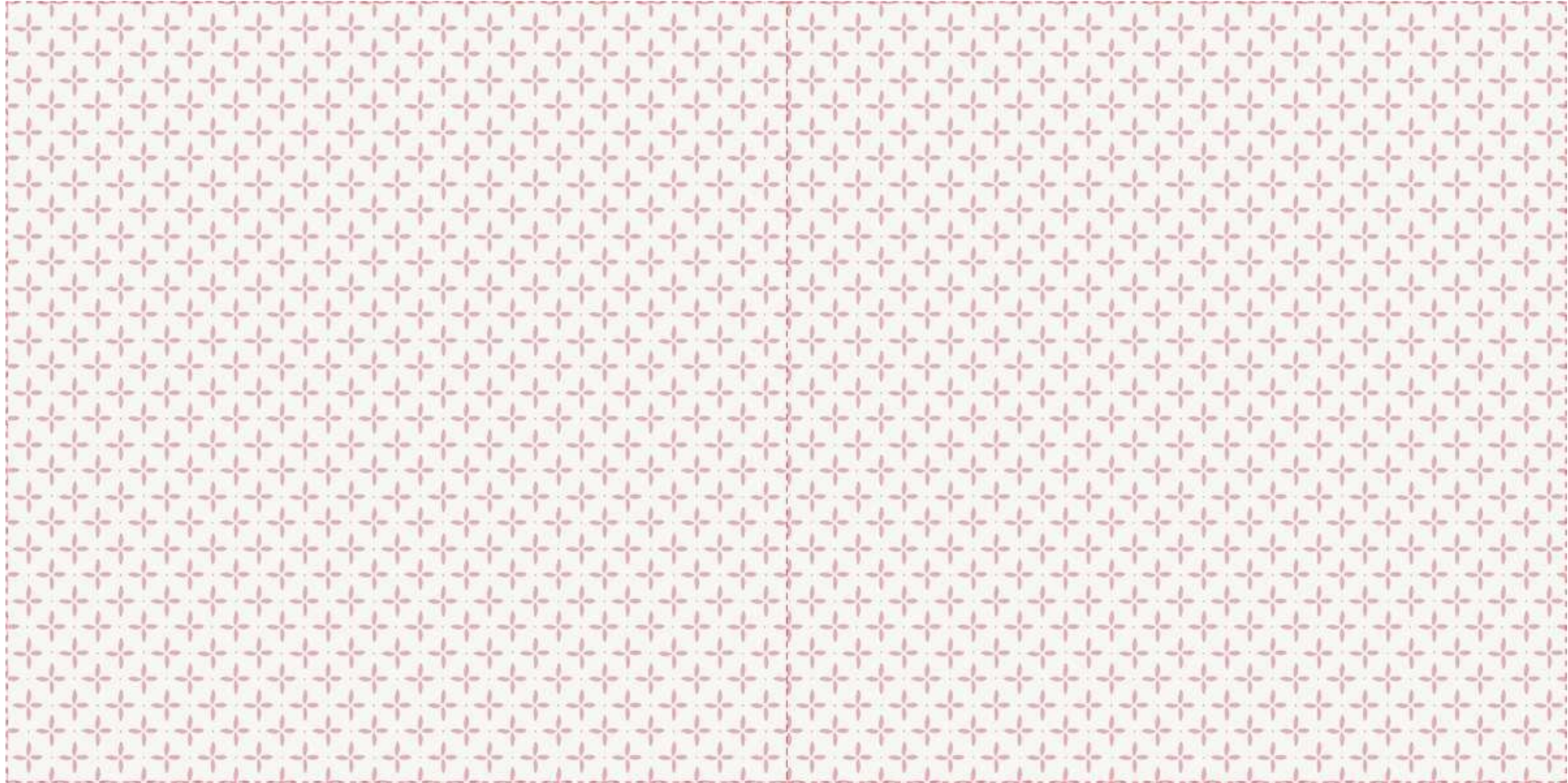


# FOLLY IN SUNSET 26X26 PILLOW

Cutting Instructions:

**MEASURE FIRST**

2 piece – (2) 27” X 27”



Pillows

Hidden Zipper – zips left to right

Care Label – sew inside - near zipper closure  
Check order for fabric

Brand Label

NO BRAND LABEL PROVIDED



# FOLLY STORM

## 8X37 CORDED BOLSTER

### Cutting Instructions:

**MEASURE FIRST**

### Pillow notes:

Serge all sides of pillow

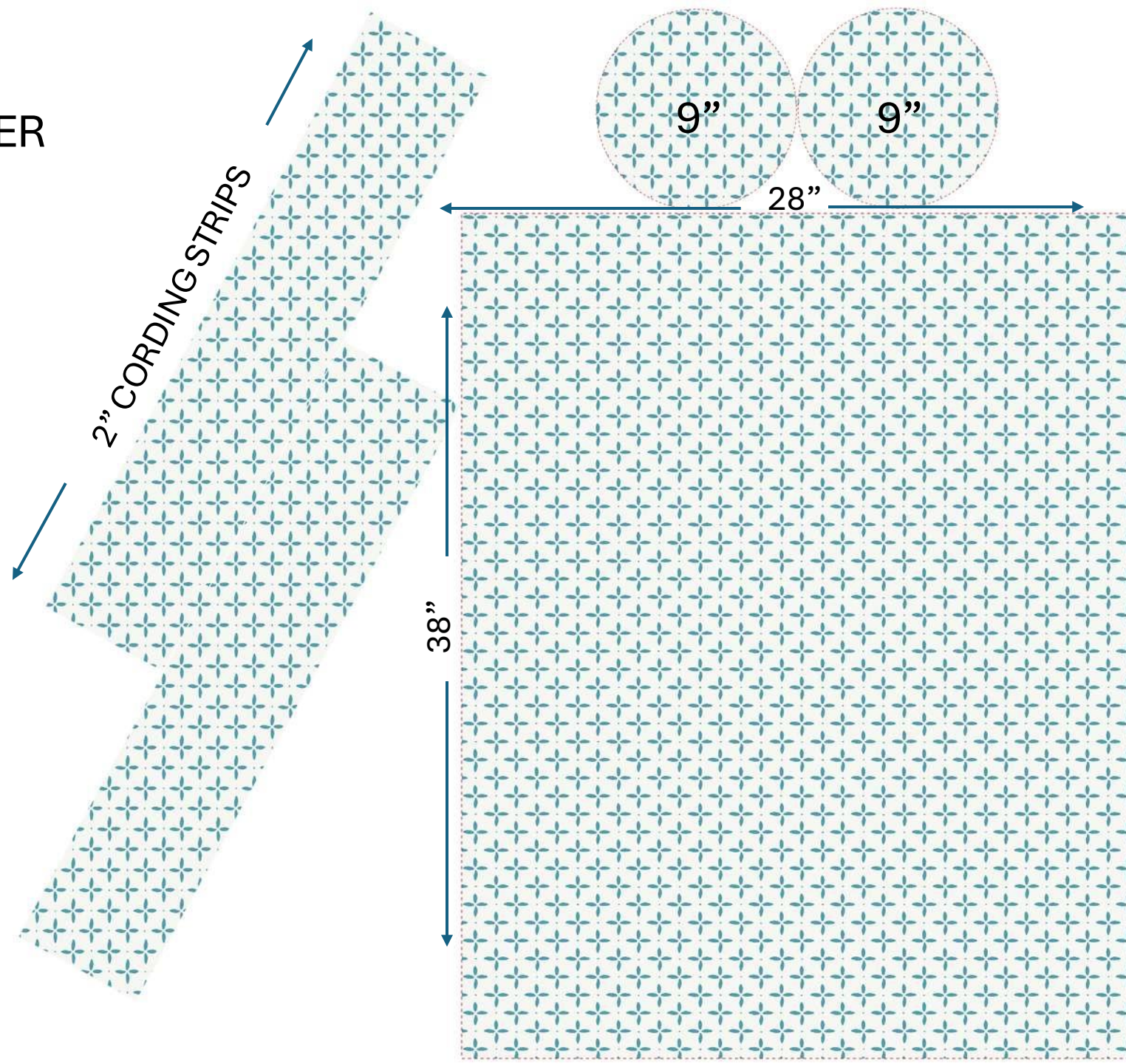
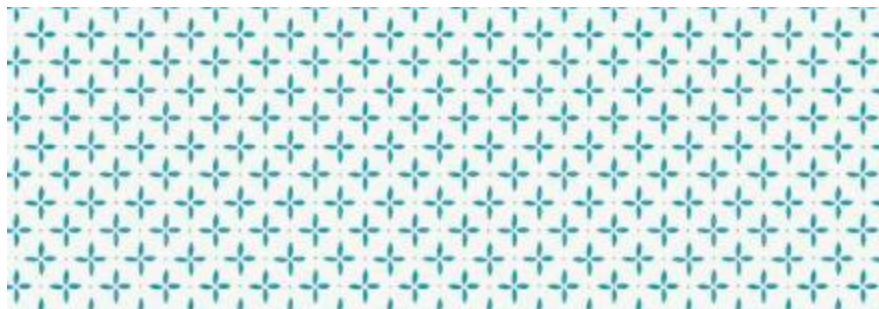
Cording around circles

Hidden zipper

Zipper zips left to right

Care Label – sew inside - near zipper closure  
Check order for fabric

### FINISHED BOLSTER ORIENTATION





IVA ADMIRAL  
72X72  
SHOWER CURTAIN

Cutting Instructions:

**MEASURE FIRST**

**CUT SIZE 77X74**

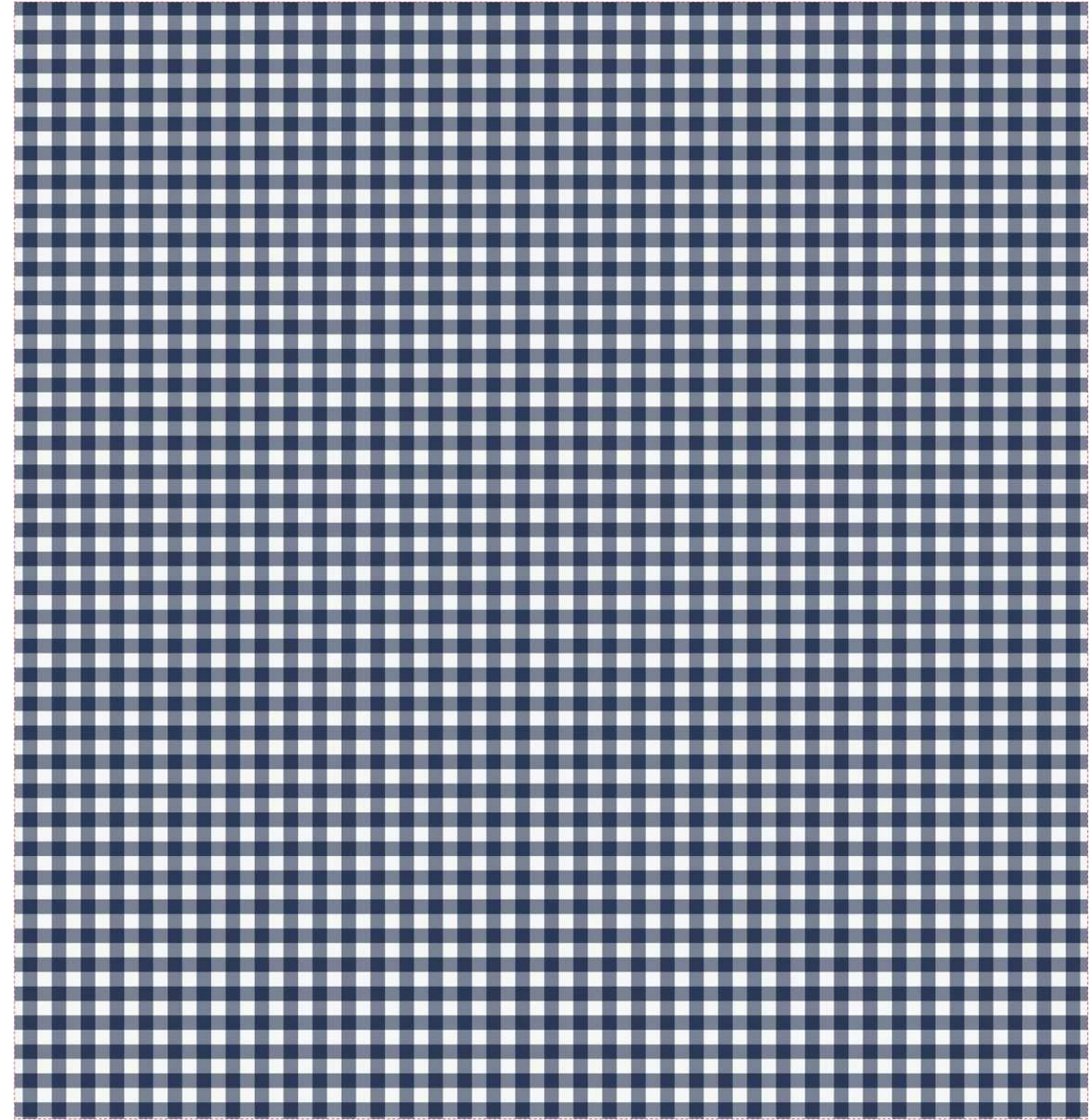
Peachskin Fabric

HEM ALL SIDES – 1”

Overlock stitch the top

1” hem on the top

Come in 2” from each side and divide the remaining inches  
by 12 to add (12) ½” button-holes





GEORGIA GOLD  
84X72  
SHOWER CURTAIN

Cutting Instructions:

**MEASURE FIRST**

**CUT SIZE 88X74**

Peachskin Fabric

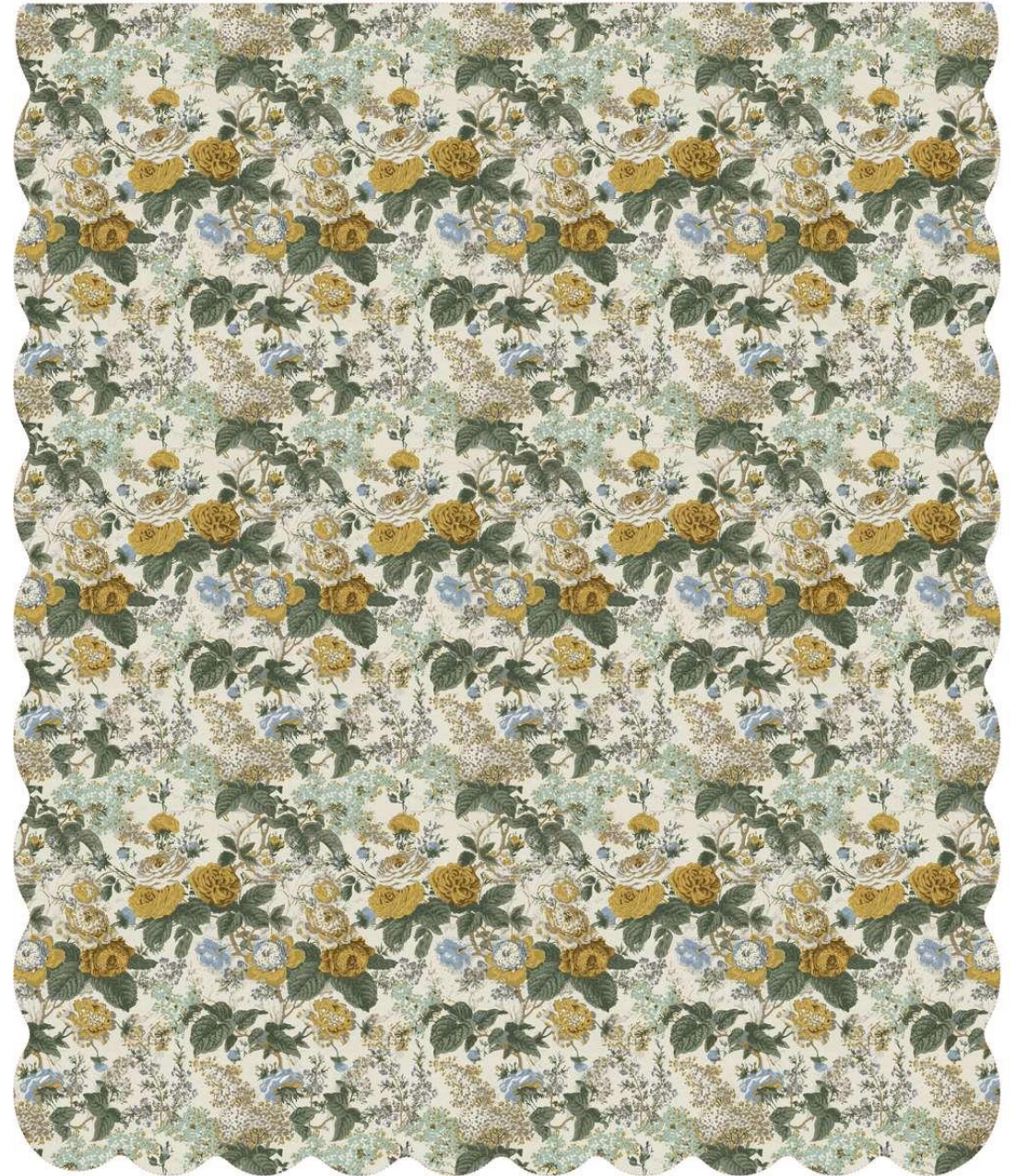
Scallop Shower Curtain

Color of Binding - **White**

Overlock stitch the top

1" hem on the top

Come in 2" from each side and divide the remaining inches by 12 to add (12) ½" button-holes





# GEORGIA BALLET 8X37 CORDED BOLSTER

## Cutting Instructions:

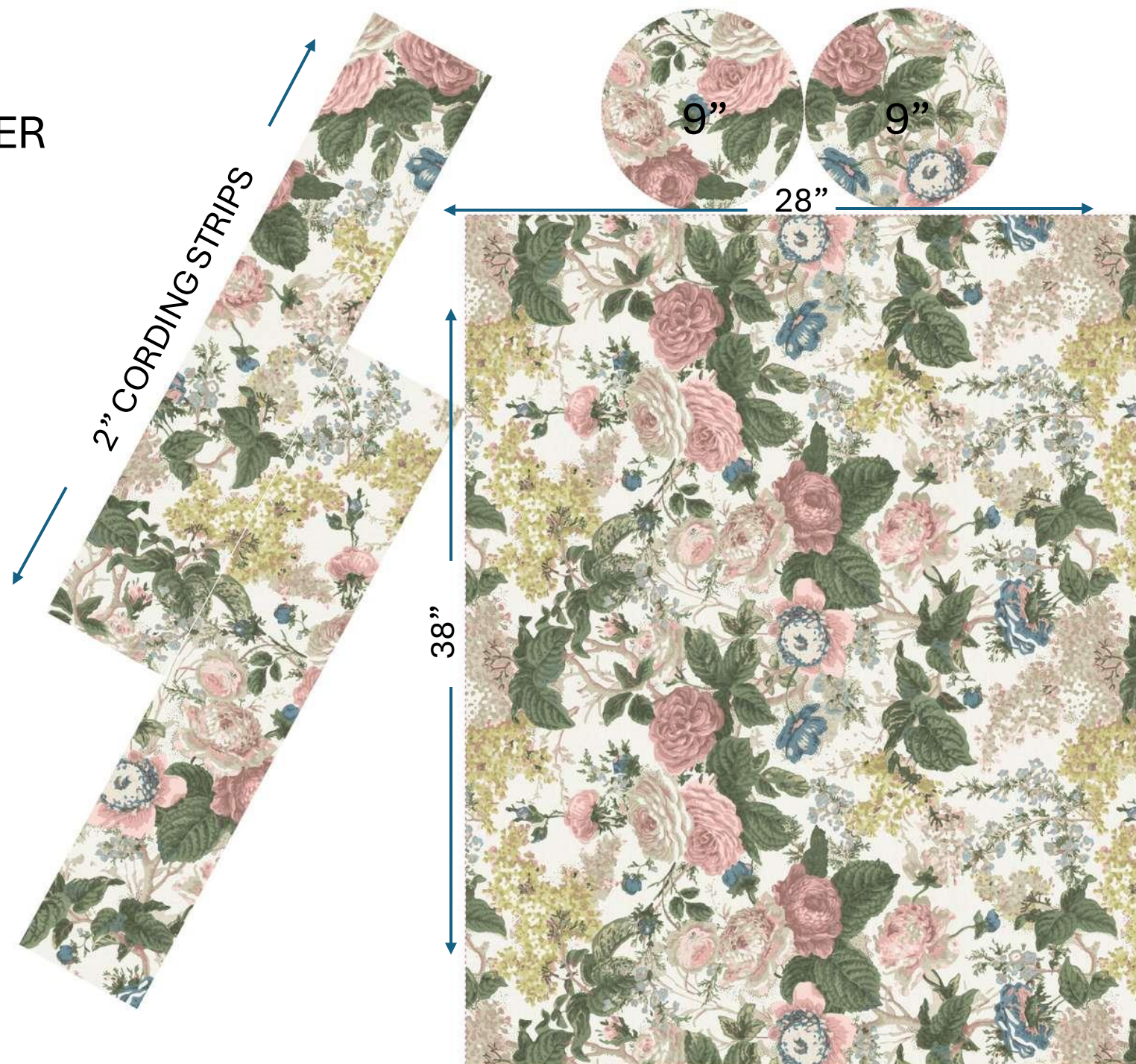
**MEASURE FIRST**

## Pillow notes:

Serge all sides of pillow  
Cording around circles  
Hidden zipper  
Zipper zips left to right

Care Label – sew inside - near zipper closure  
Check order for fabric

## FINISHED BOLSTER ORIENTATION





KATHRYN RAIN  
84X72  
SHOWER CURTAIN

Cutting Instructions:

**MEASURE FIRST**

**CUT SIZE 88X74**

Peachskin Fabric

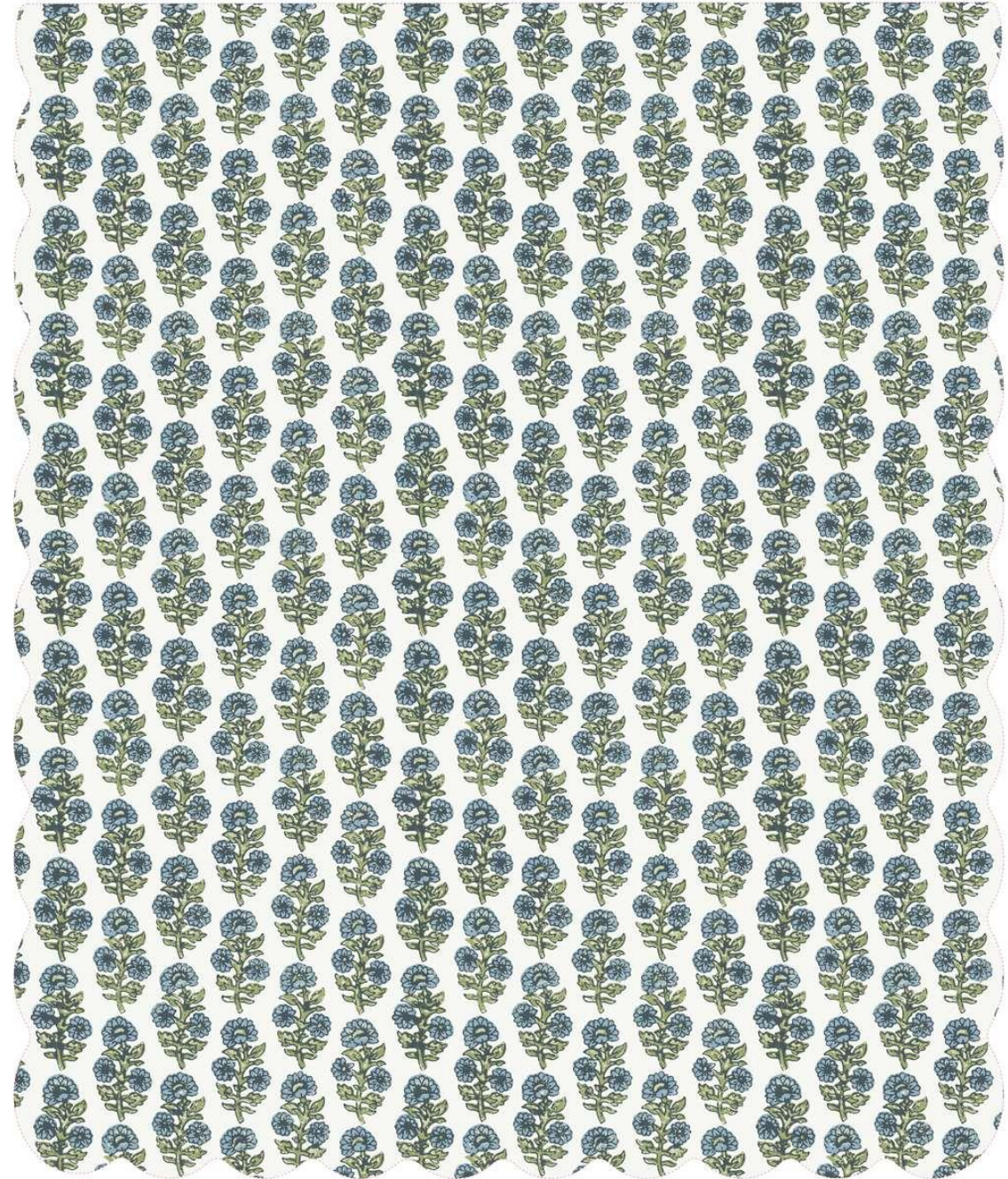
Scallop Shower Curtain

Color of Binding - **White**

Overlock stitch the top

1" hem on the top

Come in 2" from each side and divide the remaining inches  
by 12 to add (12) ½" button-holes





# MEGAN MOSS 25X35 CORDED PILLOW

## Cutting Instructions:

### **MEASURE FIRST**

4 piece – (2) 26” X 36”

(2) 2” strips for cording

## Pillows

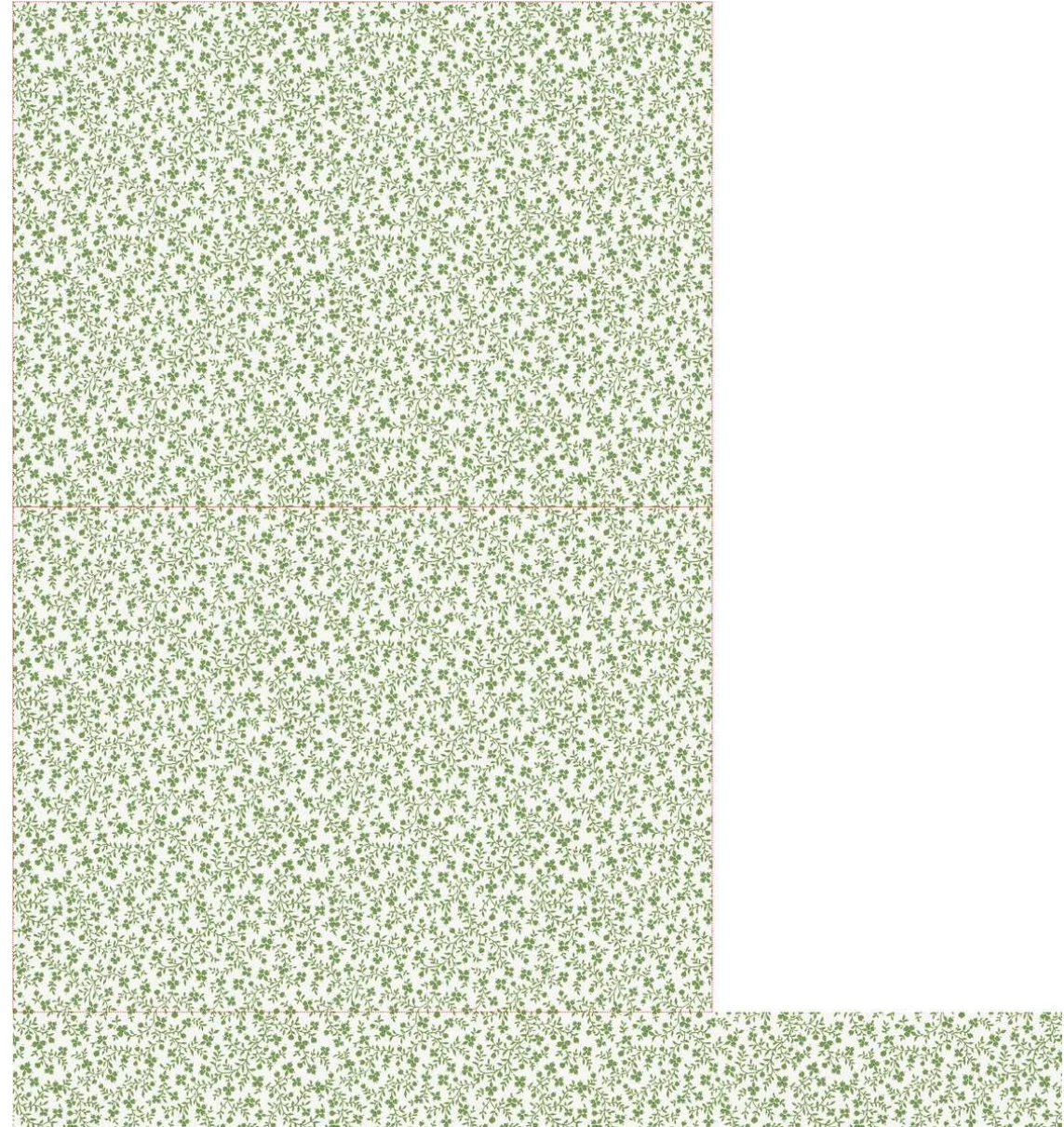
Hidden Zipper – zips left to right

Corded pillows – zipper goes behind cording

Care Label – sew inside - near zipper closure  
Check order for fabric

## Brand Label

NO BRAND LABEL PROVIDED



(2) CORDING STRIPS (2” wide)