



NAPKINS – 20"x20" – NEWPORT FABRIC

CUT SIZE 23" x 23"
FINISH AT 20" x 20"

FINISH WITH 1/2" HEM

[BRAND/CARE LABEL](#) – CUSTOMER SUPPLIED. (This is the only label that will be used)



CORAL NEUTRAL

CUT SIZE 23" x 23"

FINISH 20"X20" NAPKIN
NEWPORT FABRIC

FINISH WITH 1/2" HEM

[BRAND/CARE LABEL](#) – CUSTOMER SUPPLIED.
(This is the only label that will be used)



CORAL ROSE

CUT SIZE 23" x 23"

FINISH 20"X20" NAPKIN
NEWPORT FABRIC

FINISH WITH 1/2" HEM

[BRAND/CARE LABEL](#) – CUSTOMER SUPPLIED.
(This is the only label that will be used)



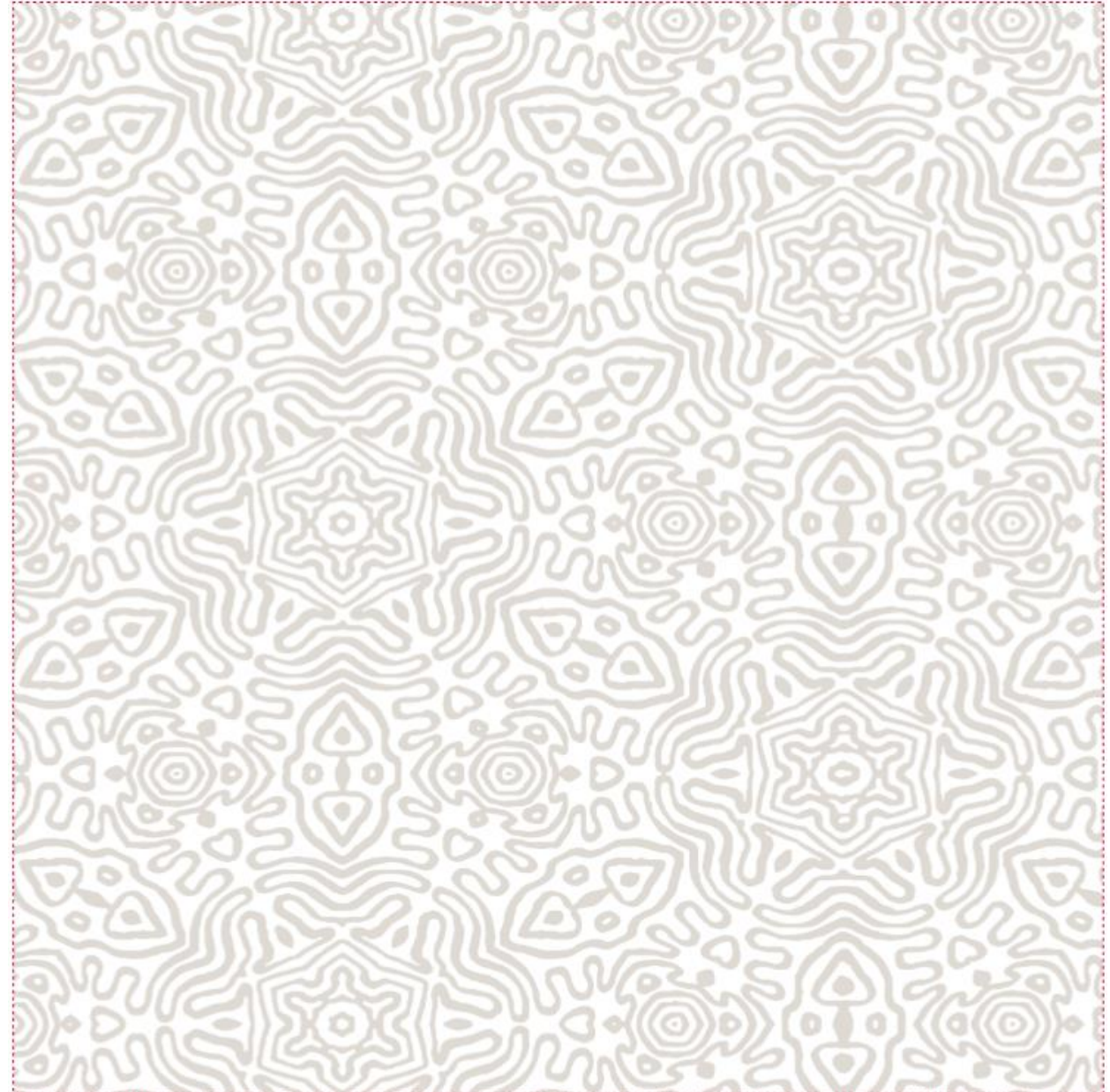
MARMELADE NEUTRAL

CUT SIZE 23" x 23"

FINISH 20"X20" NAPKIN
NEWPORT FABRIC

FINISH WITH 1/2" HEM

[BRAND/CARE LABEL](#) – CUSTOMER SUPPLIED.
(This is the only label that will be used)



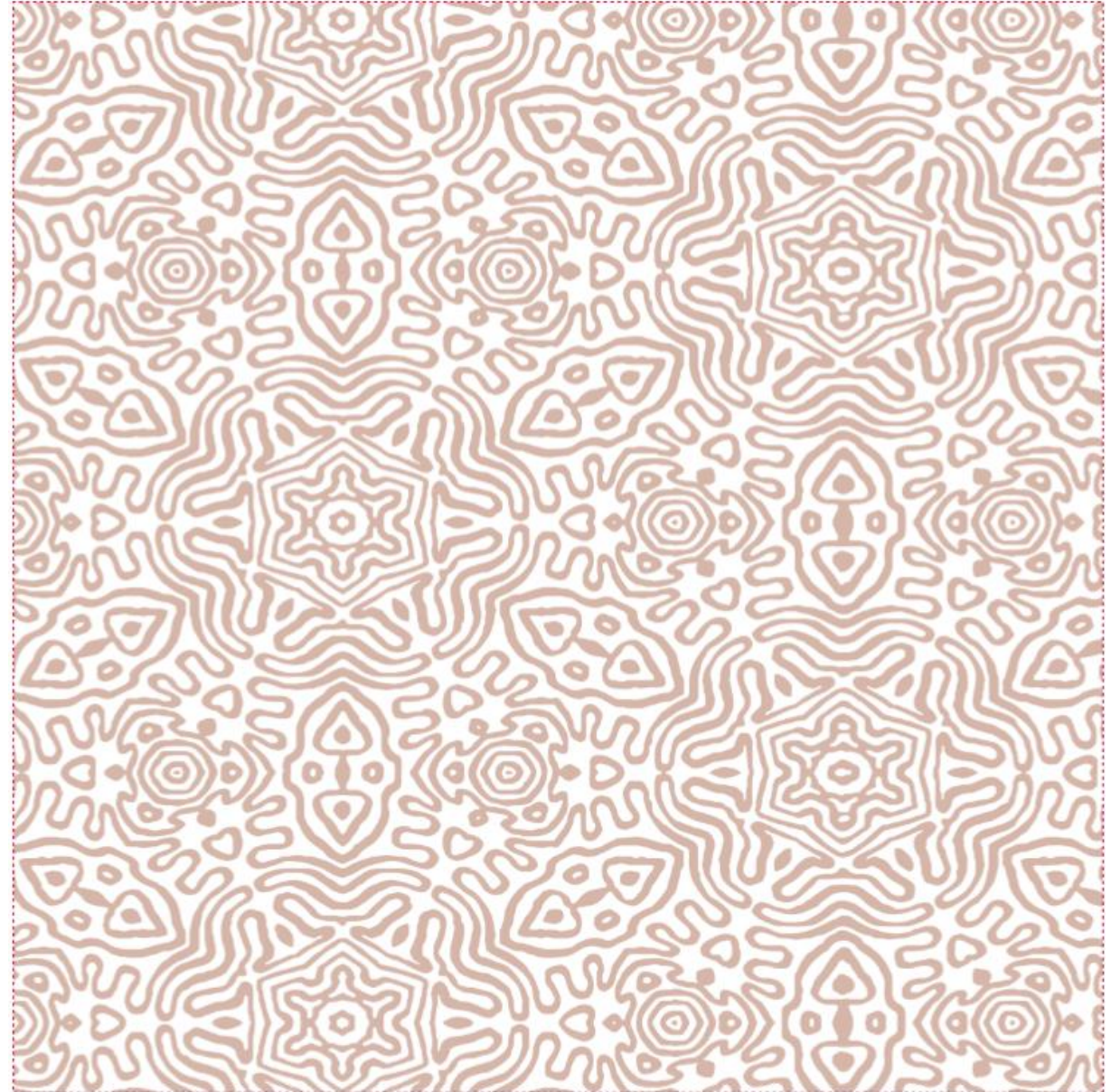
MARMELADE ROSE

CUT SIZE 23" x 23"

FINISH 20"X20" NAPKIN
NEWPORT FABRIC

FINISH WITH 1/2" HEM

[BRAND/CARE LABEL](#) – CUSTOMER SUPPLIED.
(This is the only label that will be used)



SPECKLE NEUTRAL

CUT SIZE 23" x 23"

FINISH 20"X20" NAPKIN
NEWPORT FABRIC

FINISH WITH 1/2" HEM

[BRAND/CARE LABEL](#) – CUSTOMER SUPPLIED.
(This is the only label that will be used)



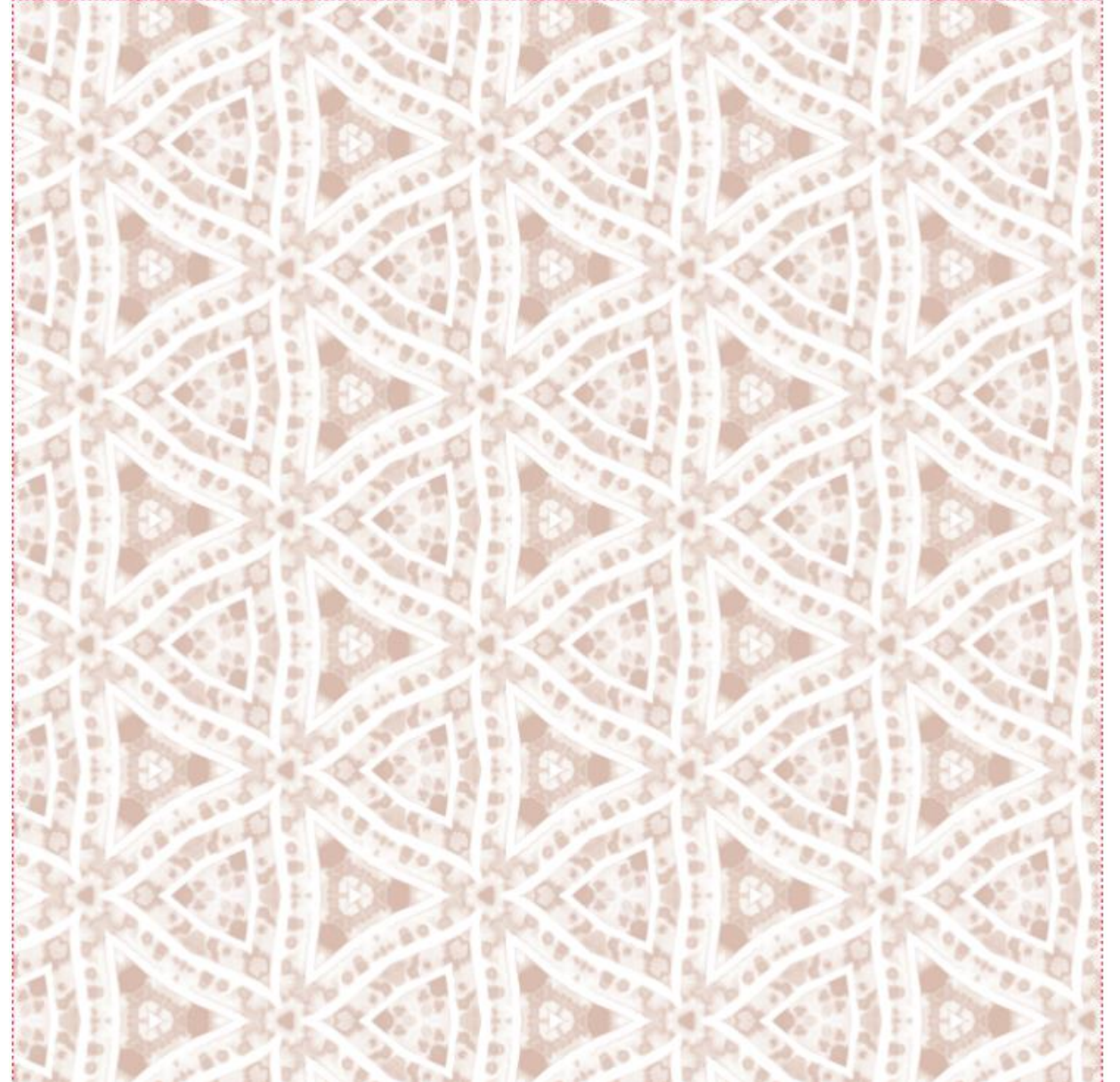
SPECKLE ROSE

CUT SIZE 23" x 23"

FINISH 20"X20" NAPKIN
NEWPORT FABRIC

FINISH WITH 1/2" HEM

[BRAND/CARE LABEL](#) – CUSTOMER SUPPLIED.
(This is the only label that will be used)



TROPICAL TOILE (TT) NEUTRAL

CUT SIZE 23" x 23"

FINISH 20"X20" NAPKIN
NEWPORT FABRIC

FINISH WITH 1/2" HEM

[BRAND/CARE LABEL](#) – CUSTOMER SUPPLIED.
(This is the only label that will be used)



TROPICAL TOILE (TT) ROSE

CUT SIZE 23" x 23"

FINISH 20"X20" NAPKIN
NEWPORT FABRIC

FINISH WITH 1/2" HEM

[BRAND/CARE LABEL](#) – CUSTOMER SUPPLIED.
(This is the only label that will be used)

