

MALI ONYX MED DOG BED

TRAPPER FABRIC CARE LABEL

SEW CARE LABEL INSIDE SHELL

WITH DOWN-ALT INSERT

MEDIUM DOG BED FINISH SIZE - 38X30X6

EXPOSED ZIPPER ON 2 SIDES – ON THE BOTTOM OF THE DOG BED.  
START ZIPPER IN FRONT AND FINISH ON RIGHT SIDE

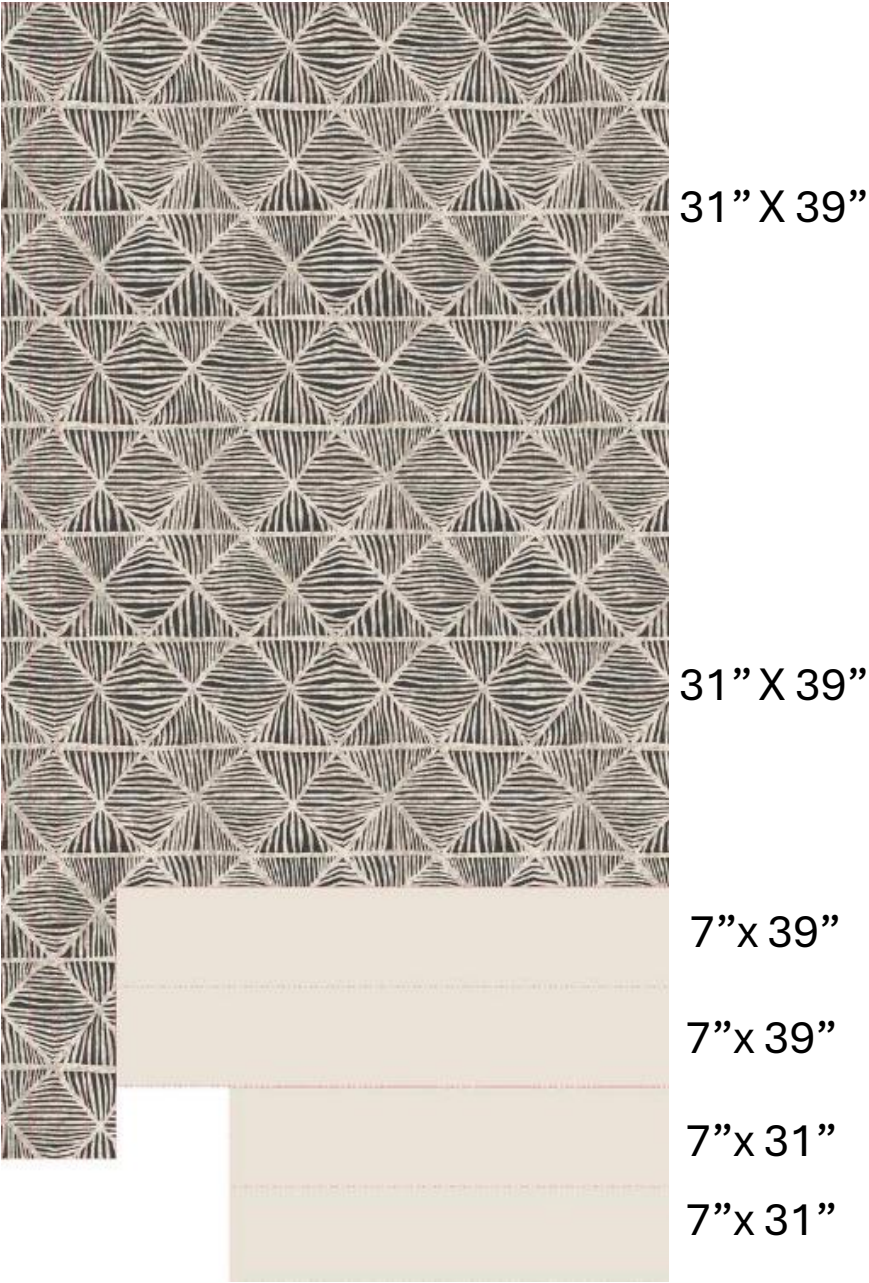
DOWN-ALT INSERT - 40X32X8 - (FILL AMOUNT APPROX 10 LBS)

(USE LAW LABEL STYLE 200DA WITH (\_\_\_\_\_) AND FILL IN INSERT SIZE

USE LARGE COMFORTER BAG TO SHIP THE FINISHED DOG BED

SHIPS IN 26 X 23 ½ X 13 BOX

Cording strips (4)  
approx. 80" x 2" wide



MALI TIGER LILY MED DOG BED

TRAPPER FABRIC CARE LABEL

SEW CARE LABEL INSIDE SHELL

WITH DOWN-ALT INSERT

MEDIUM DOG BED FINISH SIZE - 38X30X6

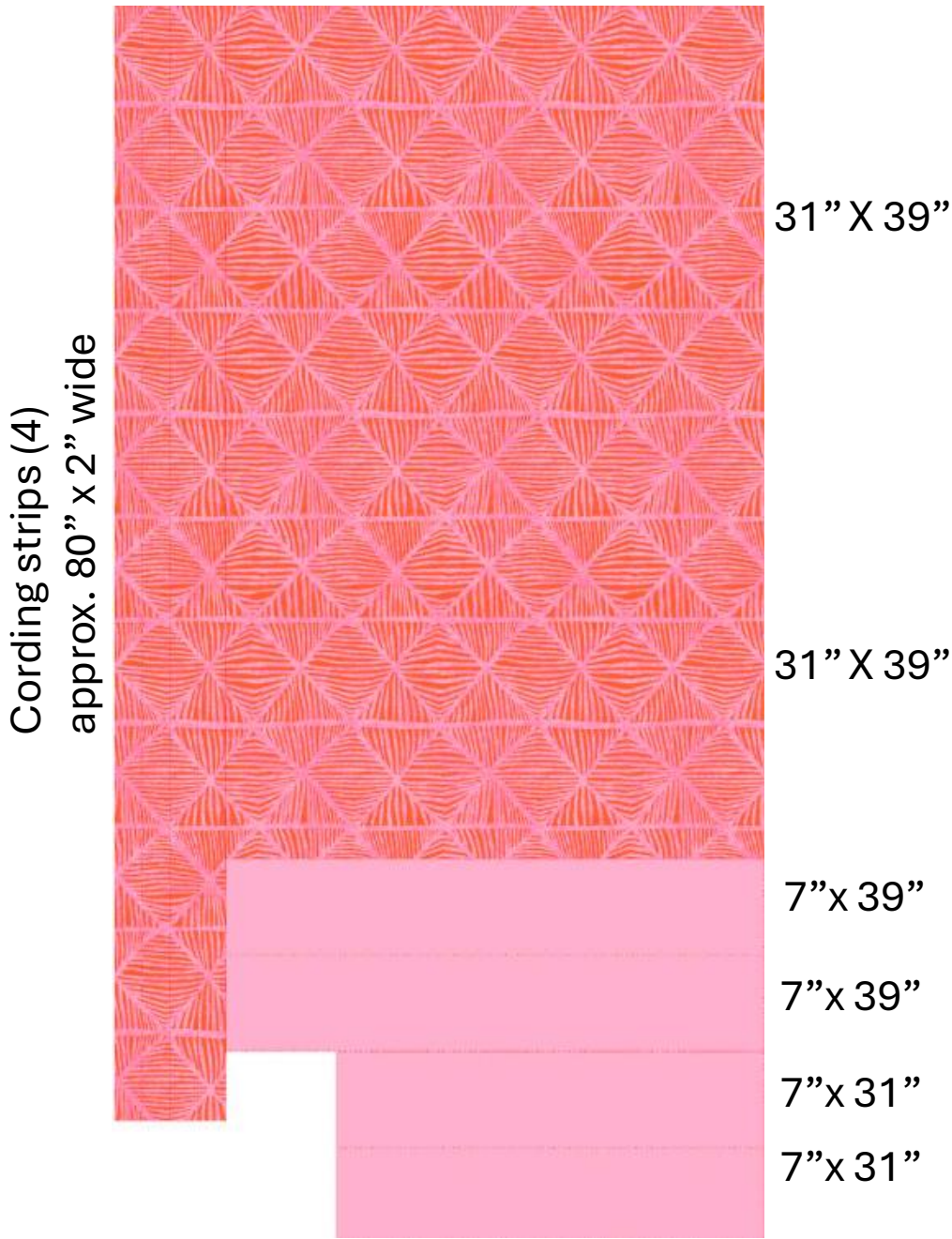
EXPOSED ZIPPER ON 2 SIDES – ON THE BOTTOM OF THE DOG BED.  
START ZIPPER IN FRONT AND FINISH ON RIGHT SIDE

DOWN-ALT INSERT - 40X32X8 - (FILL AMOUNT APPROX 10 LBS)

(USE LAW LABEL STYLE 200DA WITH (\_\_\_\_\_) AND FILL IN INSERT SIZE

USE LARGE COMFORTER BAG TO SHIP THE FINISHED DOG BED

SHIPS IN 26 X 23 ½ X 13 BOX



MAXIMO BARELY BLUE MED DOG BED

TRAPPER FABRIC CARE LABEL

SEW CARE LABEL INSIDE SHELL

WITH DOWN-ALT INSERT

MEDIUM DOG BED FINISH SIZE - 38X30X6

EXPOSED ZIPPER ON 2 SIDES – ON THE BOTTOM OF THE DOG BED.

START ZIPPER IN FRONT AND FINISH ON RIGHT SIDE

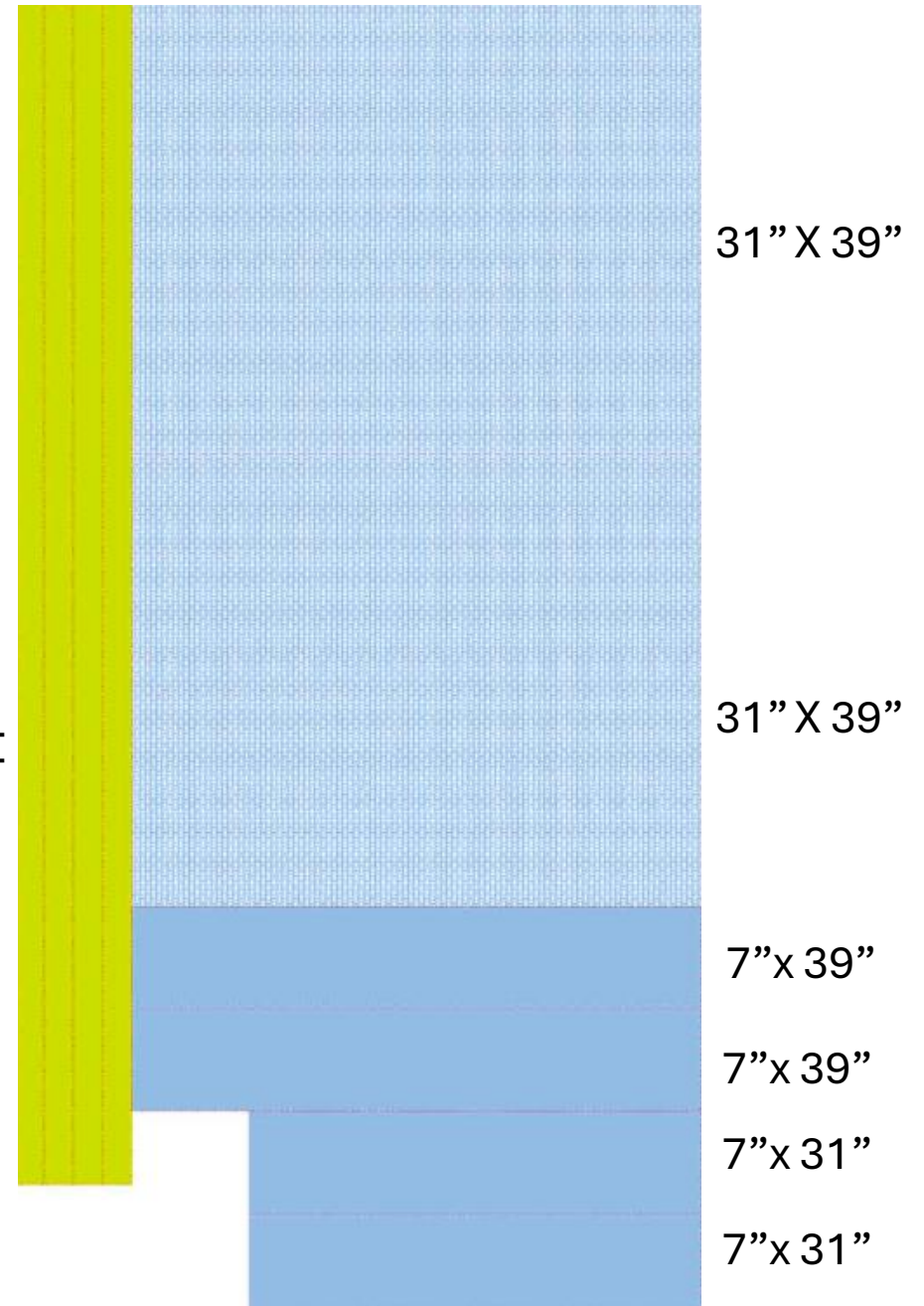
DOWN-ALT INSERT - 40X32X8 - (FILL AMOUNT APPROX 10 LBS)

(USE LAW LABEL STYLE 200DA WITH (\_\_\_\_\_) AND FILL IN INSERT SIZE

USE LARGE COMFORTER BAG TO SHIP THE FINISHED DOG BED

SHIPS IN 26 X 23 ½ X 13 BOX

Cording strips (4)  
approx. 80" x 2" wide





MAXIMO PEONY MED DOG BED

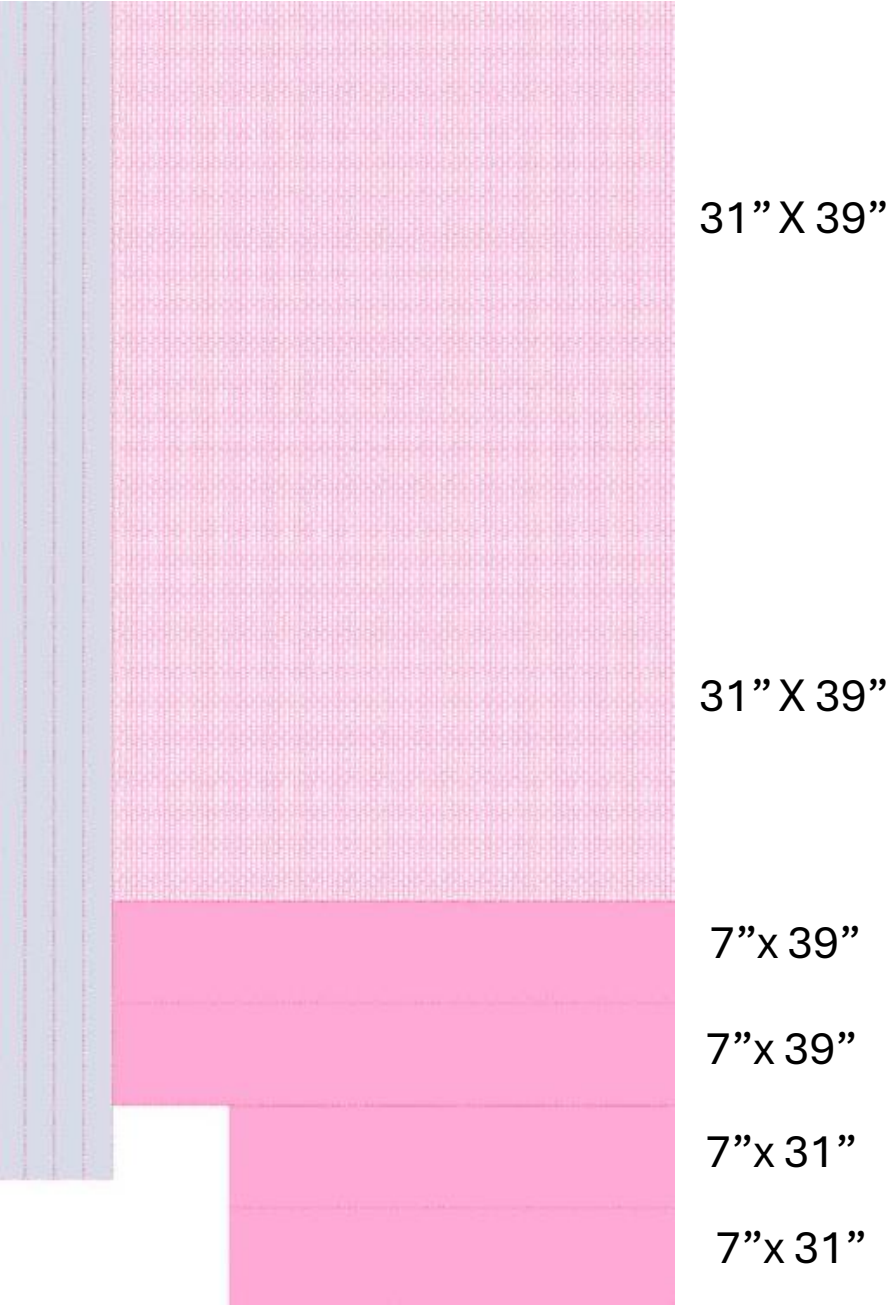
TRAPPER FABRIC CARE LABEL

SEW CARE LABEL INSIDE SHELL

WITH DOWN-ALT INSERT

- MEDIUM DOG BED FINISH SIZE - 38X30X6
- EXPOSED ZIPPER ON 2 SIDES – ON THE BOTTOM OF THE DOG BED.  
START ZIPPER IN FRONT AND FINISH ON RIGHT SIDE
- DOWN-ALT INSERT - 40X32X8 - (FILL AMOUNT APPROX 10 LBS)
- (USE LAW LABEL STYLE 200DA WITH (\_\_\_\_\_) AND FILL IN INSERT SIZE
- USE LARGE COMFORTER BAG TO SHIP THE FINISHED DOG BED
- SHIPS IN 26 X 23 ½ X 13 BOX

Cording strips (4)  
approx. 80" x 2" wide



VENTA FLORAL PINK MED DOG BED

TRAPPER FABRIC CARE LABEL

SEW CARE LABEL INSIDE SHELL

WITH DOWN-ALT INSERT

MEDIUM DOG BED FINISH SIZE - 38X30X6

EXPOSED ZIPPER ON 2 SIDES – ON THE BOTTOM OF THE DOG BED.

START ZIPPER IN FRONT AND FINISH ON RIGHT SIDE

DOWN-ALT INSERT - 40X32X8 - (FILL AMOUNT APPROX 10 LBS)

(USE LAW LABEL STYLE 200DA WITH (\_\_\_\_\_) AND FILL IN INSERT SIZE

USE LARGE COMFORTER BAG TO SHIP THE FINISHED DOG BED

SHIPS IN 26 X 23 ½ X 13 BOX

Cording strips (4)  
approx. 80" x 2" wide



31" X 39"

31" X 39"

7"x 39"

7"x 39"

7"x 31"

7"x 31"

ZIGBY SAND MED DOG BED  
TRAPPER FABRIC CARE LABEL  
SEW CARE LABEL INSIDE SHELL  
WITH DOWN-ALT INSERT

MEDIUM DOG BED FINISH SIZE - 38X30X6

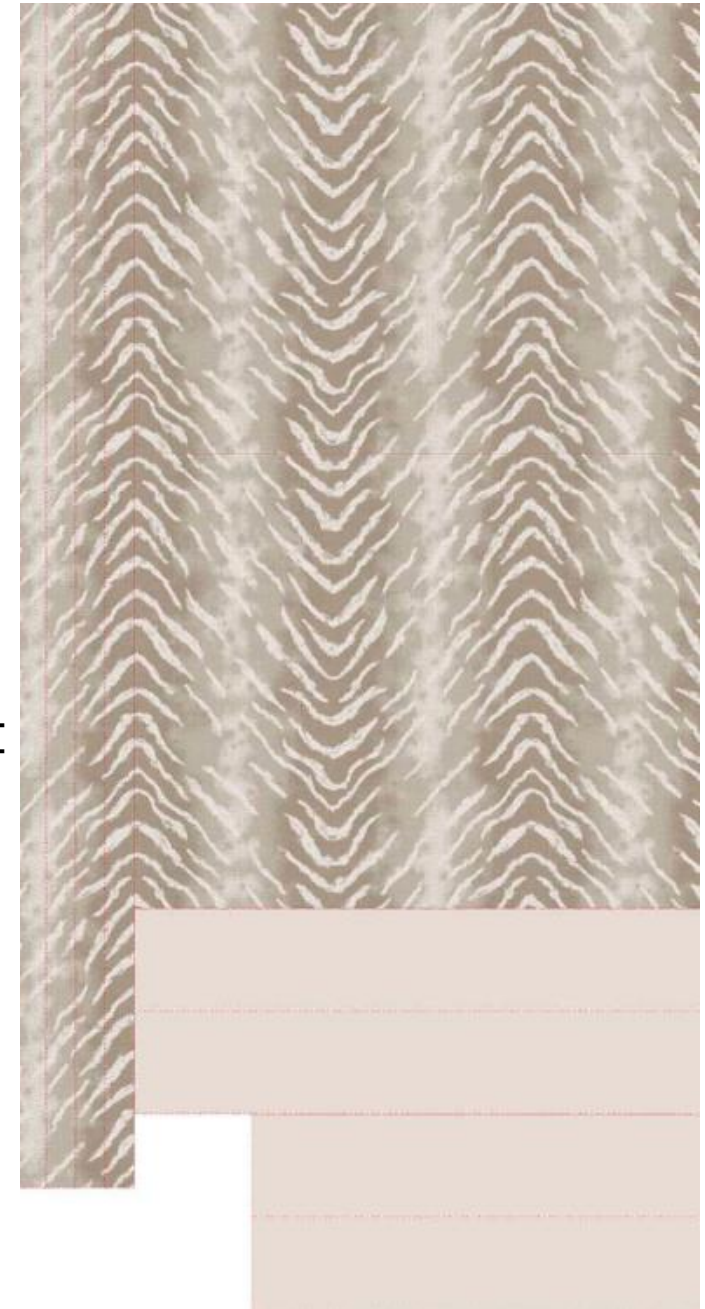
EXPOSED ZIPPER ON 2 SIDES – ON THE BOTTOM OF THE DOG BED.  
START ZIPPER IN FRONT AND FINISH ON RIGHT SIDE

DOWN-ALT INSERT - 40X32X8 - (FILL AMOUNT APPROX 10 LBS)

(USE LAW LABEL STYLE 200DA WITH (\_\_\_\_\_) AND FILL IN INSERT SIZE

USE LARGE COMFORTER BAG TO SHIP THE FINISHED DOG BED  
SHIPS IN 26 X 23 ½ X 13 BOX

Cording strips (4)  
approx. 80" x 2" wide



31" X 39"

31" X 39"

7" x 39"

7" x 39"

7" x 31"

7" x 31"